



CP_104_PCI

> **4 RS232 PCI Card**

Benefits

Affordable

Reliable PCI Card

**Fully Medialon
Manager Software
compatible**

4 RS232 Serial Ports

The **CP_104_PCI** series is designed for people looking for an easy-to-use four port serial board.

Just plug the C104H series board into a PCI slot, and all configuration tasks will be done automatically, eliminating the need to adjust I/O addresses and IRQ hardware switches and jumpers.

The C104H is an economical multiport solution for users who need to control several RS232 devices, but are unable to do so using only the PC's COM1 and COM2 ports.

Applications

Museums

Cabarets

Live Events

Cruise Ships

Staging

Part Number

AK_C104_PCI 4 ports RS232 PCI Board with cables

Hardware

Connector Type Sub-D37 to Sub-D9

Interface

Bus PCI ver. 2.1.(32 bits)
Serial RS232
No. of Ports 4
Signals TXD, RXD, RTS, CTS, DTR, DSR, DCD, GND

Performance

Speed 50-921.6 Kbps
Max. No. of Ports 16 (4 boards)

Configuration

Parity none, even, odd, space, mark
Data Bits 5,6,7,8
Stop Bits 1, 1.5, 2
IRQ PCI - Assigned by BIOS
I/O Address PCI - Assigned by BIOS

Features

Low repair rate with ASIC design.
Delivers fastest data transmission available with speeds up to 921.6 Kbps.
On-chip hardware flow control.
No switches or jumpers easy to configure by software.

Accessories

Included: Cables

CP_104_PCI Related Products

Optional: Show Control Machine Pro (GD_SCMPRO)

Show Control Machine III (GD_SCMIII)

Hardware Installation

The installation of the Smartio C-104H Series consists of hardware and software installation. The respective sections of the operating systems in the next chapter deal with the software installation. The hardware installation is detailed in this chapter.

Installing the Smartio C-104Series Board

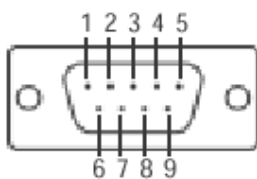
Power down your desktop computer, open the case and locate an empty PCI slot (one of the short ones in white/beige color).

Remove the slot cover bracket.

Unpack the Industio CP-114 board and remove the enclosed PCI controller card from the antistatic bag.

Note: standard precautions against static discharge should be taken when handling the card. Install the card in the empty slot, fastening properly with the mounting screw. Always use a fixing screw to fix the card, to avoid card damage. Remove the fan-out cable (Sub-D9 x 4) from the bag and connect the 37-pin connector on the metal bracket of the PCI Card. Close back the desktop computer, power on and proceed with software installation as described in the next section.

Pin	RS-232
1	DCD
2	RxD
3	TxD
4	DTR
5	GND
6	DSR
7	RTS
8	CTS
9	---



Software Driver Installation

(Instructions for Windows 2000®)

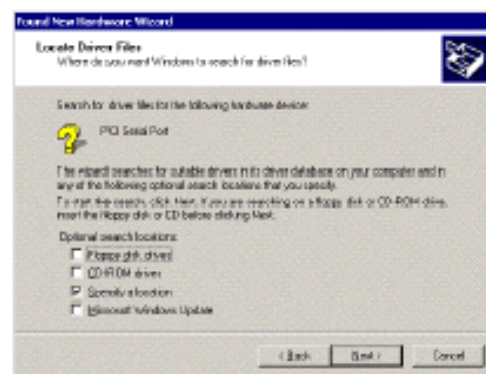
First time Installation Procedure.

The driver is distributed as a dedicated CD-ROM.



Upon the next start of Windows, a new hardware device will be detected. The installation will be performed automatically. Follow the on-screen instructions.

When prompted by Windows configuration manager choose "Specify a location".

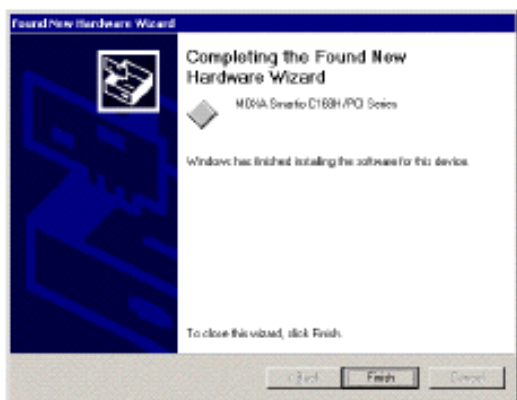


Insert the MOXA Driver CD-ROM and specify driver location for the Wizard. Assume that the CD-ROM driver letter is "F:", enter the driver location in the Windows and continue the installation procedure.



Follow the standard steps just taking care to always specify the CD-ROM (F:) as the source unit.

When Windows has finished the board's driver installation, click [Finish] to continue rest of driver installation.

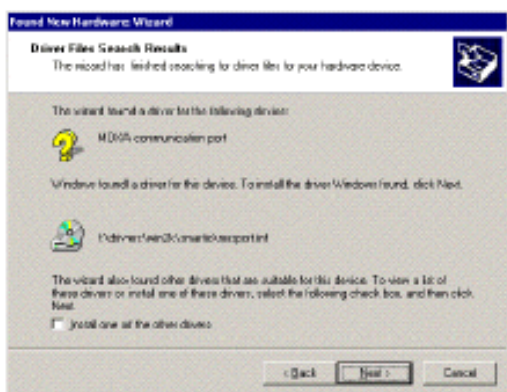


The screen pops up "Found New Hardware Wizard" window to continue the rest of procedures.



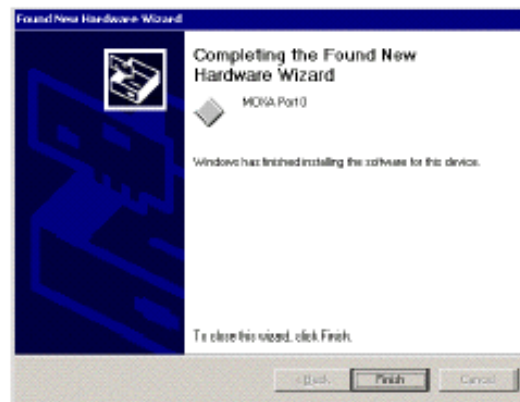
After all files copy to the system, the window "Found New Hardware Wizard" displays "MOXA Port0". It means, Windows has finished the port0' driver installation and click [Finish] to install other ports' installation.

This procedure will take for a while depends on the number of ports you install.



The whole procedure is finished, when the "Found New Hardware" disappears.

If you would like to know the result of this installation, please refer to the chapter 6 "Check the Installation Result".



Medialon MxM Installation

No specific MxM installation is needed

Note: Refer to the MxM Help for Device creation and Commands.

Check Installation Result

This section provides help for troubleshooting problems encountered in CP-104H PCI installation and configuration process. The most common problems are resolved following these steps:

- Make sure the card is properly seated in the PCI slot and the screw is fastened.
- Make sure the drivers are properly installed..
- Verify that the card is properly configured using Windows Device Manager. To get to the Device Manager, follow "Start" > "Settings" > "Control Panel" > "System" > "System Properties" > "Device Manager".

If the driver installation for new added device is successful, you can see the Moxa board Industrio CP104H in the "Multi-port serial adapter" folder.

You may expand the "Ports (COM<P)" to check the status of COM ports. If there's any mark on the icon, the installation may have problem.

If a conflict is present, try to uninstall, power down, power back on and reconfigure that card.

If this fails, refer to the MEDIALON support (as indicated in the final section of this manual).

Diagnostic Utility Program

PComm Lite 2000 is a convenient diagnostic program for MOXA boards only, provides internal and external testing. This program can verify correct operation of both the H/W and S/W for all MOXA boards and ports.

To run diagnostic, click on "Start" > "Programs" > "PComm Lite 2000 Ver.1.0" > "PComm Diagnostic".

Please refer to on-line help of PComm Lite 2000 for more information.

Medialon Support

For any problem with the installation of the MOXA PCI board, please use MEDIALON Support Hotline sending an email to support@medialon.com

Please make sure you indicate the following minimal set of information:

- Version of Medialon Manager Software used
- Version of MxM used
- Model and serial number of the MOXA PCI card
- Brand and model of the PC
- Version of the Windows operating system (reported in the "Start" > "Settings" > "Control Panel" > "System" > "System Properties" > "General" window also reachable right clicking on "My Computer" and selecting "Properties")
- Is Windows "Device Manager" reporting configuration problems?
- Was the card tested on another PC?

For updated information please refer to our website, which is freely available at www.medialon.com where you will also find all updated Medialon Manager Software MxMs.

MEDIALON Inc

2977 McFarlane Road, Suite 301
Miami, FL 33133, USA
Tel.: +1 305 445 4045
Fax: +1 305 445 4048
www.medialon.com

MEDIALON

101 rue Pierre Séward
F 92324 Châtillon Cedex, France
Tel : + 33 (0)1 46 55 60 70
Fax : + 33 (0)1 46 55 54 83
www.medialon.com

