

# DE-311



## Applications

Museums

Cabarets

Live Events

Cruise Ships

Staging

## Benefits

Affordable

Ethernet link (IP)

Fully Manager compatible

1 RS-232/422/485 Serial Port

## 1 RS 232 NPort Server

The NPort Server DE-311 is designed for RS-232/422/485 industrial communication. Each RS-232/422/485 node can control one device in RS-232 or up to 32 devices in a multi-drop environment in RS422/485. On-chip hardware flow control and built-in termination resistors guarantee data integrity and optical isolation and surge protection are available as options. All of this makes the DE-311 node highly reliable and suitable for show control applications using Ethernet/IP connections.

# Installation

## Hardware Installation

### Connecting to the Network

There are two ways to use the 10/100BaseT Ethernet jack that is located on NPort Server back panel. For many of the applications using NPort Server, you will simply plug one end of your Ethernet cable into the 10/100BaseT jack, and the other end into the hub connected to your network. In this case, use a regular straight-through Ethernet cable.

In some cases, such as when configuring drivers and software, you will find it convenient to hook NPort Server directly to your computer's Ethernet card. To do this you will need to use a cross-over cable, such as the one supplied with your server.

### Connecting the Power

After connecting NPort Server to your network, you should take the following steps to connect the power cable (via the power adapter).

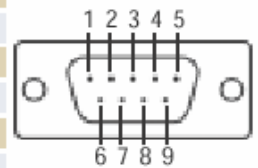
*Note: It is strongly recommended that NPort Server be connected to the network before turning on the power.*

1. Connect the power cord to NPort Server rear panel.
2. Plug the other end of the power cord into an electrical outlet.
3. Turn the on/off switch to the I-position.
4. Check the power LED on the top panel to verify that the server is receiving power.

### Connecting Asynchronous Serial Devices

Connections are available directly thru a Sub-D9 connector. Connect the Sub-D9 connector to the serial device (Adaptation cable may be needed).

| Pin | RS-232 | RS-422  | RS-485   |
|-----|--------|---------|----------|
| 1   | DCD    | RxD-(A) | -        |
| 2   | TxD    | RxD+(B) | -        |
| 3   | RxD    | TxD+(B) | Data+(B) |
| 4   | DSR    | TxD-(A) | Data-(A) |
| 5   | GND    | GND     | GND      |
| 6   | DTR    | CTS-(A) | -        |
| 7   | CTS    | CTS+(B) | -        |
| 8   | RTS    | RTS+(B) | -        |
| 9   | ---    | RTS-(A) | -        |

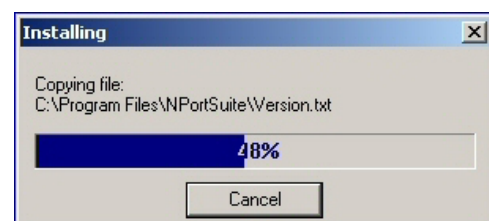
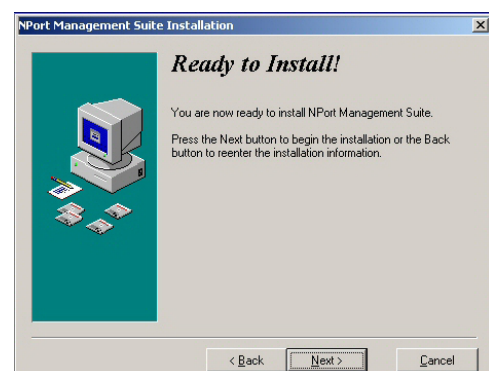


## Software Driver Installation

### Installing NPort Management Suite

Follow the steps given below to install NPort Management Suite on your Windows-based computer.

1. Run the Device Server setup program
2. Click on **Next** when the **Welcome** window opens to proceed with the installation.
3. Select the NPort Management Suite utilities that you would like to install.
4. Click on **Next** to install program files in the default directory, or click on **Browse** to select an alternative location.
5. Click on **Next** to proceed with the installation.
6. The **Installing** window reports the progress of the installation.

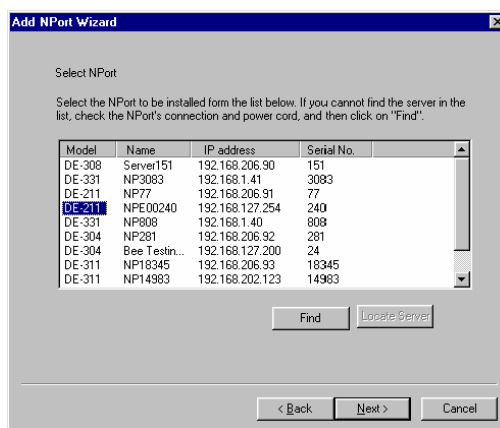
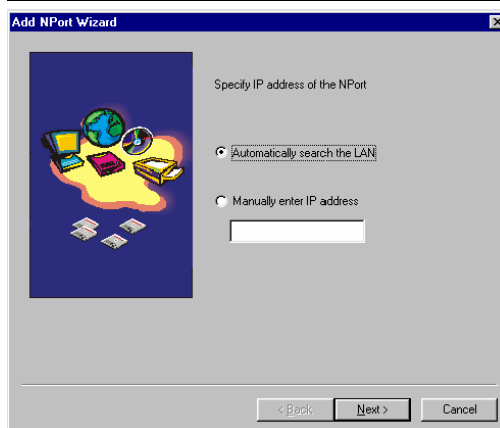
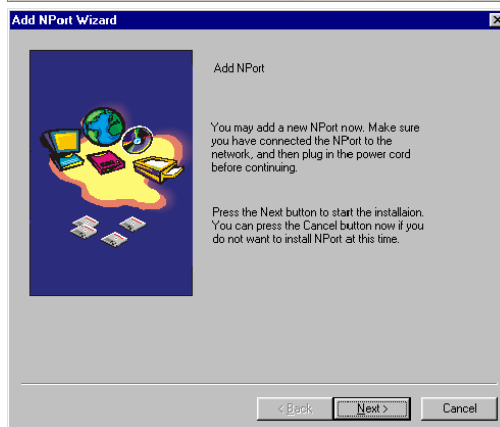
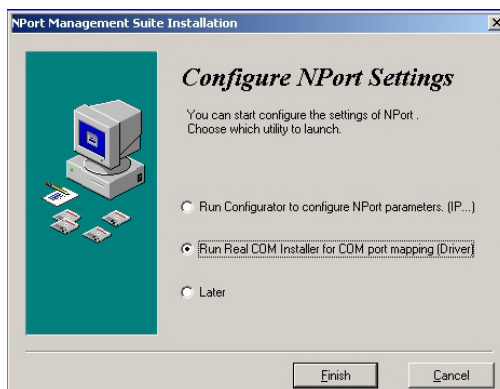


7. Select **Run Real Com Installer**. You can always run Configurator or Real COM Installer later from under the Windows **Start** button.

8. **Real Com Installer** opens. Click on **Next** Button in the Add Nport wizard window.

9. You can select **Automatically search the LAN** or **Manually enter IP address**. The second option allows you to search for NPorts that are not connected directly to your host's LAN.

10. Click on the Model of the server you would like to add, and then click on **Next** to continue.



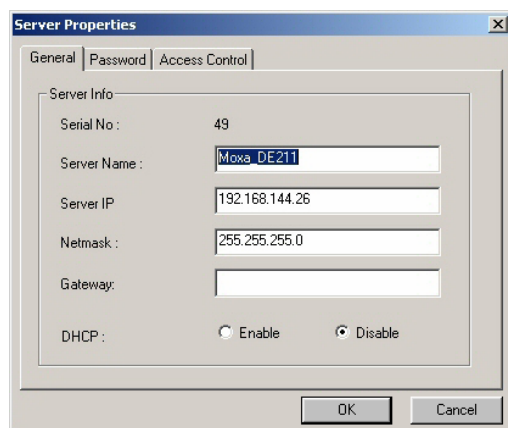
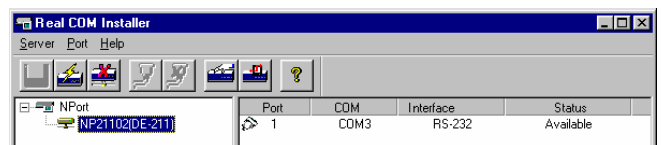
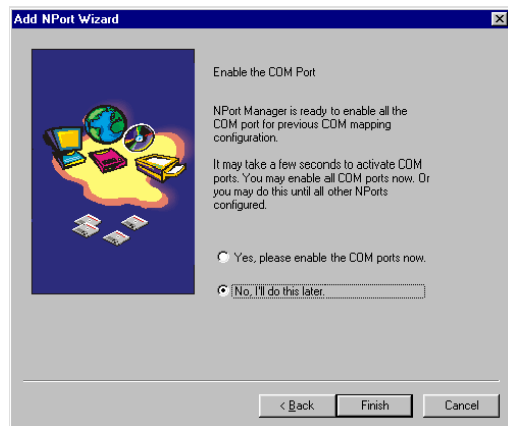
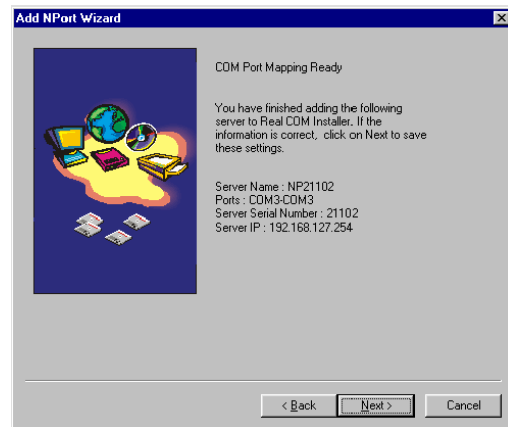
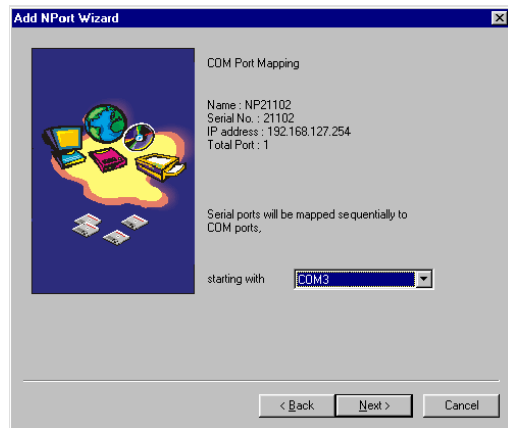
11. The NPort's serial ports are mapped sequentially, starting from the smallest available COM number. Higher COM numbers that are already assigned to other ports will be skipped.

12. Click on **Next** to save the settings to your host computer and the NPort.

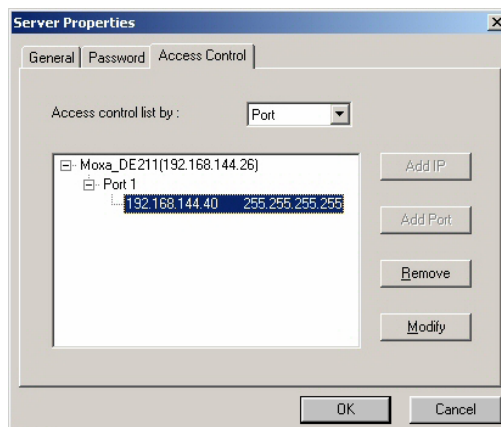
13. Select you would not like to enable the COM ports that were just assigned, and then click on **Finish**.

14. Real COM Installer will now display the NPort and ports that were just added to your host computer. Double – click on the Nport to change settings.

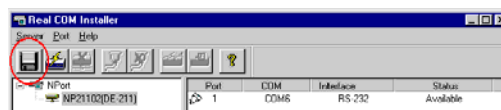
15. In **General** Tab fill in the server name, Server IP, and Netmask fields.



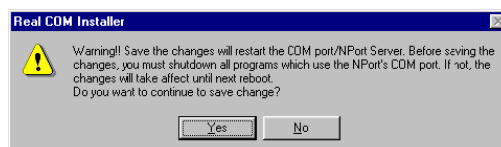
16. In **Access Control** remove all the IP addresses, by selecting the IP address and clicking on button **Remove**. Click on **OK** button to close the window



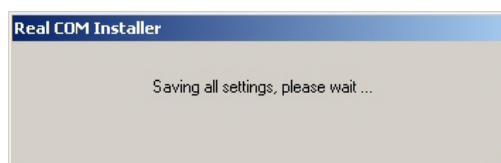
17. Click on **Save** button (Floppy icon)



If you are currently running programs that access the newly added NPort's serial port(s), be sure to shut down those programs before clicking on **Yes** in the following window.



The new settings are saved and the nport is rebooted.



## Medialon MXM Installation

No specific MxM installation is needed.

Refer to the *MxM Help for Device creation and Commands*.

## Check Installation Result

This section provides help for troubleshooting problems encountered in NPort Server installation and configuration process. The most common problems are resolved following these steps:

Make sure the drivers are properly installed. Verify that the NPort Server is properly configured using Windows Device Manager. To get to the Device Manager, follow **Start -> Settings -> Control Panel -> System -> System Properties -> Device Manager**. If the driver installation for new added device is successful, you can see the Moxa NPort Server in the "Multi-port serial adapter" folder.

If a conflict is present, try to uninstall, power down, power back on and redo the install procedure. If this fails refer to the MEDIALON support (as indicated in the final section of this manual).

## Medialon Support:

For any problem with the installation of the MOXA NPort Server, please use MEDIALON Support Hotline sending an E-Mail to [support@medialon.com](mailto:support@medialon.com)

Please make sure you indicate the following minimal set of information:

- Version of Medialon Manager software used
- Version of MxM used
- Model and serial number of the MOXA NPort Server
- Brand and model of the PC
- Version of the Windows operating system (reported in the **Start -> Settings -> Control Panel -> System -> System Properties -> General** window also reachable right clicking on **My Computer** and selecting **Properties**)
- Is Windows **Device Manager** reporting configuration problems?
- Was the NPort Server tested on another PC?

For updated information please refer to our website, which is freely available at <http://www.medialon.com> where you will also find all updated MxMs, Manager software.

Medialon  
101 rue Pierre Sémard  
F 92324 Chatillon Cedex France  
Tel : + 33 (0)1 46 55 60 70  
Fax : + 33 (0)1 46 55 54 83  
[www.medialon.com](http://www.medialon.com)

Medialon Inc  
701 SW 27th Ave, Suite 702  
Miami, FL 33135, USA  
Tel : + 1 305 631 4155  
Fax : + 1 305 631 4159  
[www.medialon.com](http://www.medialon.com)