

RR IRNET 16



Applications

Museums

Cabarets

Cruise Ships

Theatres

Low cost (infrared only) device control.

Benefits

Affordable

Ethernet Link (IP)

16 Infrared ports

IP Infrared Interface

Based on infrared remote control expertise gained over many years with the RedRat2 and RedRat3, the irNetBox-Pro is the first RedRat product specifically designed for the professional market.

Specifications

- 19 inch 1U rack mountable case. Depth of 94mm.
- 10/100 Base-T Ethernet, USB and RS-232.
- Up to 16 IR output sockets – 3.5mm jack sockets for “stick-on” IR emitters.
- IR outputs switchable individually or in any combination.
- Low-power IR output to prevent IR leakage to neighboring stacked equipment.
- One high-powered output for long-range IR blaster
- Learning IR detector for recording remote control signals from original remote.
- 7V to 9V DC input, drawing around 500mA in operation.

Features

LAN Communication

Designed primarily as a network device, it can be configured to use DHCP or given a static IP address.

IR input/output functionality is controlled via TCP/IP, the details of which will be open so can be supported on any platform.

Installation

Software Installation and configuration

The following software packages must be installed in the right order before using the device with Manager (these softwares are available in the "Runtime For MxMs" directory on the Medialon Manager distribution CD).

1°) Microsoft DotNet Framework 1.1

- Double-click on "dotnetfx.exe"
- accept all default

2°) Lantronix Device Installer

- Double-click on "setup.exe"
- accept all default

3°) RedRat SDK

- Double-click on "setup.exe"
- accept all default

4°) RedRat Signal DB Utility

- Double-click on "setup.exe"
- accept all default

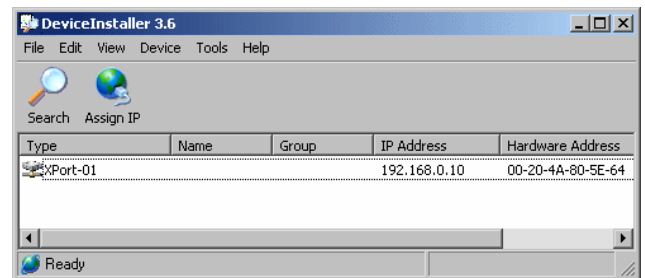
5°) RedRat IrNetBoxManager

- Double-click on "setup.exe"
- accept all default

Hardware Installation / configuration

- Connect an ethernet cable between the irNetBox and an Ethernet port of your computer. If there is no DHCP server installed on your computer, you need to assign an IP address to the irNetBox with the following procedure :

- Run the Lantronix Device Installer.
- Choose the "Device/Search" menu and wait until the irNetBox is discovered.
- Select the irNetBox.
- Choose the "Device/Assign IP Address" menu.
- Select "Assign a specific IP address" and



click "Next".

- Type the desired IP Address, Subnet Mask and Gateway and click "Next". Gateway entry may be left as "0.0.0.0" if no gateway is used.
- Click on the "Assign" button.
- Click on the "Finish" button.
- Quit the Lantronix device installer.

CAUTION : DO NOT USE the "Device / Upgrade" or "Device / Configure" menus.

Medialon MXM Installation

Refer to the MxM Help for Device creation and Commands.

Medialon Support:

For any problem with the installation of the Red Rat product, please use MEDIALON Support Hotline sending an E-Mail to [**support@medialon.com**](mailto:support@medialon.com)

Please make sure you indicate the following minimal set of information:

- Version of Medialon Manager software used
- Version of MxM used
- Model and serial number of Nudam Modules
- Brand and model of the PC
- Version of the Windows operating system (reported in the **Start -> Settings -> Control Panel -> System -> System Properties -> General** window also reachable right clicking on **My Computer** and selecting **Properties**)
- Was the module(s) tested on another PC?

For updated information please refer to our website, which is freely available at [**http://www.medialon.com**](http://www.medialon.com) where you will also find all updated MxMs, Manager software.

Medialon
101 rue Pierre Séward
F 92324 Chatillon Cedex France
Tel : + 33 (0)1 46 55 60 70
Fax : + 33 (0)1 46 55 54 83
[**www.medialon.com**](http://www.medialon.com)

Medialon Inc
701 SW 27th Ave, Suite 702
Miami, FL 33135, USA
Tel : + 1 305 631 4155
Fax : + 1 305 631 4159
[**www.medialon.com**](http://www.medialon.com)