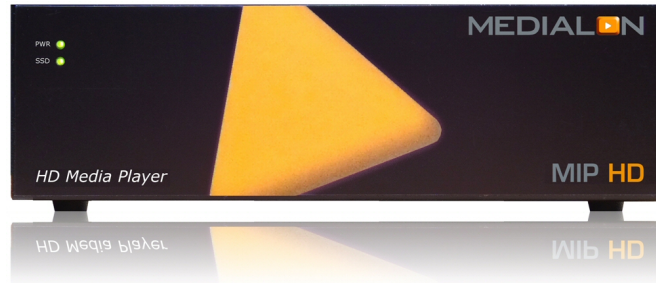


MEDIALON MIP HD

> HD Media Player

FEATURES

- 1x 10/100/1000 Base-T Ethernet Port
- 1x RS-232 DB9 Male Serial Port
- 2x USB 2.0 Ports
- 1x HDMI
- 1x DVI
- 1x VGA
- 1x Optical Audio
- 1x Digital RCA audio SPDIF
- 2x Analog Audio Out
- 1x Analog Audio In
- Autonomous
- Robust and small form factor
- Plug and Play
- Easy to use
- Low consumption
- Compatible with most common media
- Frame sync of video
- HD compatible



OVERVIEW

Medialon MIP HD is a compact player able to playback both multimedia content such as Flash, Html, Jpeg and even URLs as well as 1080p HD video. Interactive media such as Flash keep their interactivity if needed.

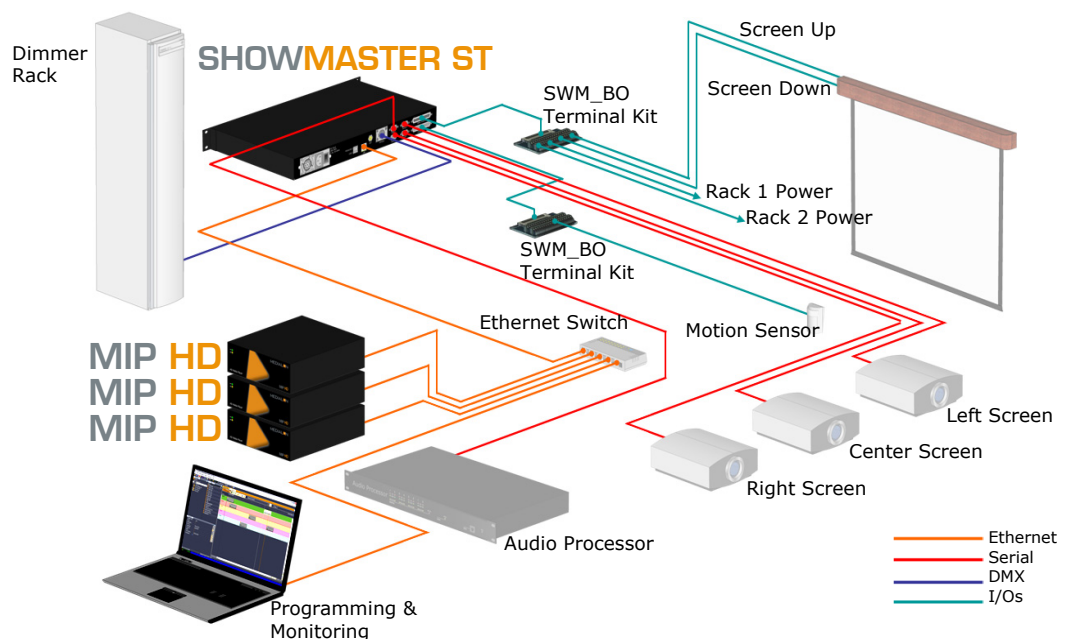
Its built-in web server provides web user interface to remotely upload media, to build up playlists and to schedule and retrieve log files.

Its Sync Video mode allows synchronization of unlimited number of HD video playback via the network.

It can either operate autonomously or be slaved of a Medialon Control System making it an ideal solution for Museum as well as Digital signage applications.

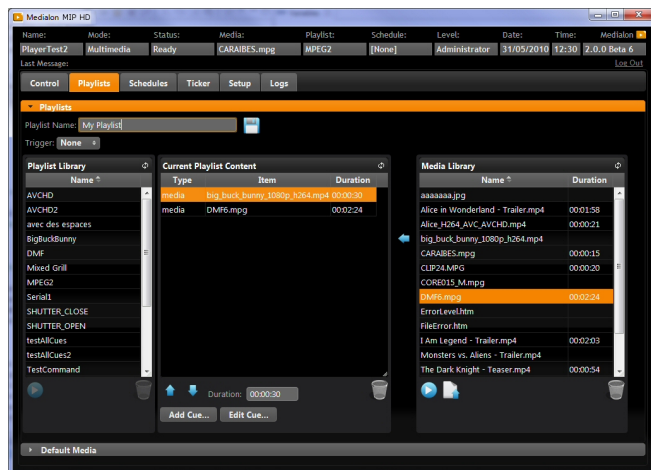
APPLICATIONS

MIP HD is designed for multimedia playback applications in museums, exhibitions, rides, interactive kiosks, stores, events, congress centers and more.



Media compatibility

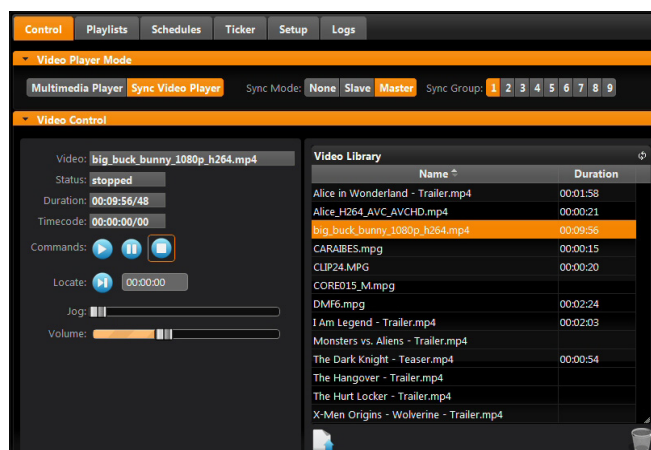
Compatible with most common media and HD video, MIP HD plays media files stored on its internal solid state drive and media accessible via URL (links to websites or video streams).



The web editor enables the user to display scrolling text messages (Ticker) either locally or from a distant point, for local messages, visitor information, visual paging or evacuation.

Video Sync over Ethernet

Playing HD video, several MIP HDs can be synchronized over the network from Medialon Control system, making it the ideal tool for multiple screen display. In this mode, MIP HD offers the legendary Medialon position tracking capability.

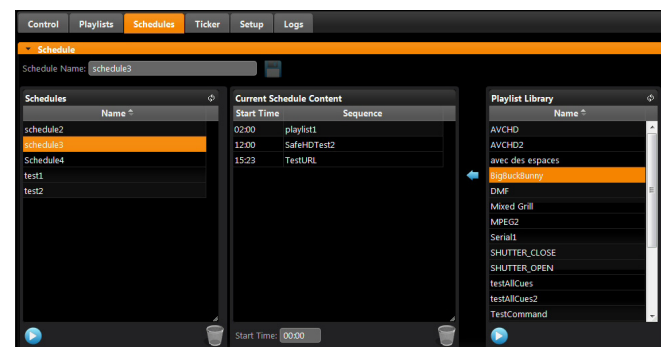


Interactivity

Media interactivity is preserved. By using a keyboard, the visitor can interact with contents like Adobe© Flash© files, HTML pages. An optional GPI accessory provides relay outputs for analog device control (lights, power) and several inputs for buttons or visitor detection sensors.

Scheduling

Via a regular web browser, locally or via the Internet, the integrated sequence and playlist editor helps to schedule media playback, visitor's interactivity, screen remote and automatic Power On/Off. Administration, supervision and maintenance features are also accessible via web browser depending on access credentials and user profile. Medialon MIP HD integrates an RS232 output to control the local display screen.



Maintenance and Logs

Daily log files for activity and status reporting are generated and stored. If the MIP HD is connected to a LAN, log files can be transmitted automatically via email for archiving.

Stable and reliable display

Silent with a small form factor, MIP HD is designed for constraining integration environments like public places. Its low power consumption and its Watchdog guarantee the operational stability 24 hours a day, 7 days a week, required for professional installations.

Part Number

- **MIP_HD** – MIP HD, HD Media Player with 16GB SSD
- **MIP_HD_64** – MIP HD, HD Media Player with 64GB SSD
- **MIP_HD_128** – MIP HD, HD Media Player with 128GB SSD

Dimensions

- Product: 219 (W) x 73 (H) x 260 (D) [67 (H) mm without feet]; 8 5/8" (W) x 2 7/8" (H) x 10 1/4" (D) [2 5/8" (H) without feet], Packaging: NC
- Rack size: 1 1/2U (H) x 1/2 19"(W)

Weight

- Rack: 5.4 lbs/2.8 Kg
- Packaging: 8 lbs /4 Kg

Power

- AC/DC adapter: Model ADP-90CD DB ; Input: 100-240 VAC 1.5A 50-60Hz ; Output: 19VDC 4.74A (90W) ; Input Connector: Male Inlet IEC C6 "Mickey Mouse" type grounded ; Output Connector: Male Barrel 5.5mm x 2.5mm ; Includes US Power Cord: NEMA 5-15 Male to IEC C5 "Mickey Mouse" Female

Enclosure

- Metal with satin black finish

Certifications

- FCC, CE, EN60950-1 FCC Class A - EN55022

Front Panel

- 1x Power LED
- 1x Operating LED

Rear Panel

- 1x 10/100/1000 Base-T Ethernet Port
- 1x RS-232 DB9 Male Serial Port
- 2x USB 2.0 Ports
- 1x HDMI
- 1x DVI
- 1x VGA
- 1x Optical Audio
- 1x Digital RCA audio SPDIF
- 2x Analog Audio Out
- 1x Analog Audio In

System

- XPE
- 1GB DDR2, SDRAM, 667 MHz
- 1x 16 GB SSD SATA Hard Drive (MIP_HD), also available with 1x 64GB SSD (MIP_HD_64) or 1x 128GB SSD SATA Hard Drive (MIP_HD_128)
- Atom N330, 1,6Ghz Processor

Media Supported

- Video: H264/AVC up to High Profile@Level 4.0 (1080p/30fps), up to 20Mb/s ; MPEG-2 SD & HD up to High Profile@High Level (1080p/30fps) up to 40 Mb/s ; WMP up to 720p/30fps up to 10 Mb/s
- Audio: Wave / MP3 / AAC / MIDI
- Still Images: Bmp / Jpeg / Gif / Tiff
- Composite: HTML / Flash (FLV not accepted)

Environmental

- Operating Temperature: 0°C/32°F to 50°C/122°F
- Operating Humidity: 10 to 80% at 25°C non-condensing
- Acoustic Noise: NC
- Heat Dissipation (Typical): NC BTU/hr

Reliability

- NA

Included Accessories

- 1x External Power Adapter

Recommended Accessories

- NA

Software Specifications

- WEB Base interface
- Multimedia playback
- Media scheduling & Calendar feature
- Video Sync
- MXM for Medialon Manager

Extensions Supported

- For external trigger: Adlink Nudam 6530 and Adlink Nudam 6060

MEDIALON Inc.

245 Catalonia Avenue
Coral Gables, FL 33134, USA
Tel.: +1 305 445 4045
Fax: +1 305 445 4048
www.medialon.com

MEDIALON

101 rue Pierre Sépard
F 92324 Châtillon Cedex, France
Tel.: +33 (0)1 46 55 60 70
Fax: +33 (0)1 46 55 54 83
www.medialon.com