

MEDIALON MIP

> Multimedia Interactive Player



Benefits

Autonomous

Robust and small form factor

Plug and Play

Easy to use

Low consumption

Compatible with all media

Secured OS

Applications

Museums

Exhibitions

Interactive Kiosks

Point of Sales

Congress Centers

Events

Information Channels

Malls

Medialon MIP is a robust player specially designed for multimedia playback applications in museums, rides, interactive kiosks and dynamic signage.

Able to play any type of media, Jpeg, Mpeg, video HD, Flash™, PowerPoint 97, Html pages or URL links, MIP is designed to operate in standalone mode and includes all features to schedule automatic playback, display screen remote, and visitor interactivity

Medialon MIP can be configured and programmed by internet or via TCP/IP network, a web browser or by Medialon Manager Show & Media Control Software.

Media compatibility

Compatible with all media and HD video, MIP plays media files stored on its hard disk and media accessible via URL (links to websites or video stream).

The web editor allows displaying scrolling text messages (Ticker) locally or from a distant point, for local messages, visitor's information, people seeking or evacuation.

Interactivity

Media interactivity is preserved. By using a touchscreen or a keyboard, the visitor can interact with contents like Flash files™, HTML pages, or PowerPoint 97™ presentations.

An optional GPI accessory provides relays outputs for analog device control (lights, power) and several inputs for press buttons and visitor detection sensors.

Scheduling

Via a regular browser, locally or via Internet, the integrated sequence and playlist editor helps to schedule media playback, visitor's interactivity, screen remote and automatic Power On/Off.

Administration, supervision and maintenance features are also accessible via web browser depending on the user profile.

Medialon MIP integrates a RS232 output to control local display screen.

Maintenance and Logs

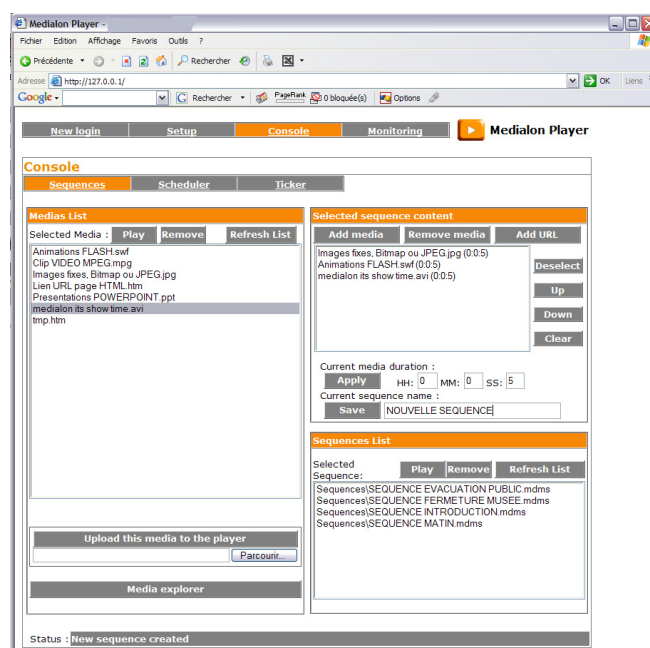
Log files are daily generated and stored for activity and status reporting. If the MIP is connected to a LAN, log files can be transmitted automatically via emails for archiving.

Stable and reliable display

Very silent and small form factored, Medialon MIP is designed for constraining integration environments like public places.

Its low power consumption, its secured OS (Win XPE) and its watchdog guarantee operations stability, 24 hours a day, 7 days a week, required for professional installations.

MIP is completely compatible with Windows™ environment and TCP/IP network administration standards.



Web programming interface

Part Number

MIP Multimedia Interactive Player
(hardware + software)

Administration features

Position and Size Adjustment of display window (pixel accuracy).
Selection of sequence to launch at start.
Selection of automatic start and stop time.
Email address for log files file sending.
Configuration of RS232 control driver of associated screen.
Player distant reboot.

Medias

Still images BMP, GIF and JPEG
URL links, Html Pages, Video streaming
Flash Animations® (swf)
PowerPoint 97® Presentations (ppt, pps)
Audio Wave and MP3 files
Mpeg1/2/4 video, AVI, DivX, HD720p WM9

CPU

CPU Socket 479
Chipset Intel® 855GME

Power

Intel® Pentium® M Celeron 1.3GHz Processor, 400Mhz.
L2 Cache 512KB (Integrated to CPU)
1GB DDR SDRAM

Memory and Storage

HDD 80Go 2,5" 5400tr IDE 8Mo Cache
Ultra DMA 100

Display

Intel® 82855GME, Intel® Extreme Graphics 2 integrated with GVA 266Mhz and 256 bits 3D motor (DVMT 2.0 dynamic up to 64MB shared with the system). Internal LVDS Interface.
1 x Connector VGA, 1280 x 1024 max resolution, compatible with 4/3 and 16/10 formats

Audio

Integrated ICH4 controller (Realtek Audio + AC97 Codec ALC 655)
1x Audio Line mini-jack output
1x SPDIF digital output to decoder

Network Connection

Ethernet LAN network interface
Gigabit LAN Intel Pro/1000 controller and interface 82540EM (10/100/1000Base-T)
RJ45 Ethernet LAN connector

USB Connection

Connector 2x USB 2.0 ports (Rear)
1x USB 2.0 port (Front)
PS/2 keyboard and mouse
1x DB25 Parallel Port Connection
2x DB9 COM serial ports

Serial Ports

2x SubD 9 RS232

Power connector

Internal 60W DC-to-ATX
External 60W AC power adapter

Physical

Size 45x283x215 mm
Weight (unit only) 2,6 kg (5.51 lb)
Operating Temp. 0°C – 45°C (32°F - 113°F)
Storage Temp. -20°C – 85°C (-4°F – 185°F)
Humidity 10% – 90% RH Non-condensing

Operating System

Windows XP Embedded

Software

Medialon Interactive Player Software

Accessories

Included: Power cables



MIP – back view

MEDIALON Inc.

2977 McFarlane Road, Suite 301
Miami, FL 33133, USA
Tel.: +1 305 445 4045
Fax: +1 305 445 4048
www.medialon.com

MEDIALON

101 rue Pierre Sépard
F 92324 Châtillon Cedex, France
Tel.: + 33 (0)1 46 55 60 70
Fax: + 33 (0)1 46 55 54 83
www.medialon.com