

# MEDIALON MANAGER V5

## > Show & Media Control Software

### Benefits

**Controls any device with any protocol on network**

**Easy programming No coding, No compilation**

**Media Synchronization**

**Media and Data Management**

**Interoperability**

**AV/ IT Compliant**

**Fast though powerful programming environment**

### Applications

**Theme Parks**

**Live Events**

**Museums**

**Cruise Ships**

**Rock Concerts**

**Stadium**

**Casinos**

**Theaters**

**Planetarium**

**Architectural Video**

The introduction of our first Audiovisual Control Software in 1999 was driven by our vision of giving the power to the user with an easy but powerful and open programming environment, using non proprietary hardware.

**Medialon Manager V5** is a Windows® based control software. Its legendary ease of programming and reliability has made it widely used in simple as well as critical control applications such as: Museum media control, Theme Parks and Attractions Show Control, Architectural video & Lighting control, Convention Centers audio & video remote control, etc.

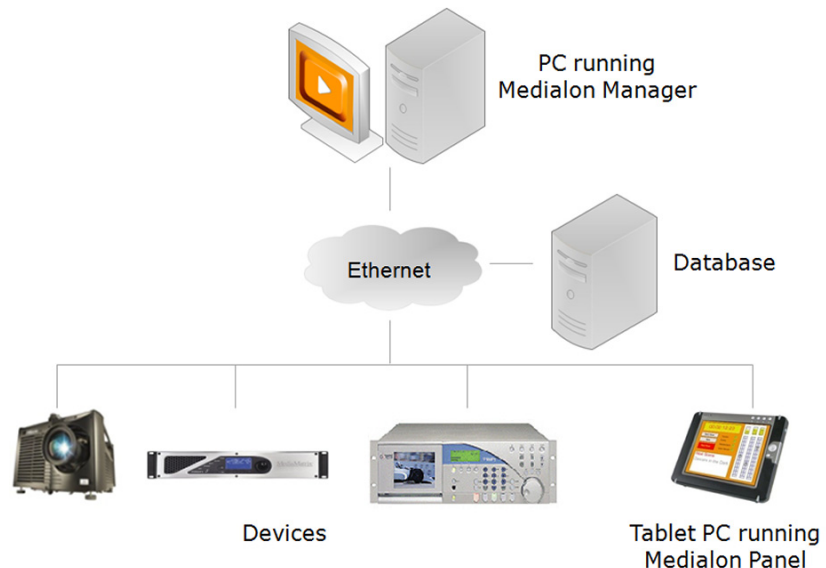
Medialon Manager can control any audiovisual equipment using any protocol and network. Being software based it integrates perfectly with IT opening a wide range of new applications. Control of audio & video streaming, links to database, media management, and facility wide control are not dreams any more.

Thanks to its easy graphical programming environment, application are programmed in much less time than with any other conventional control system, neither coding nor compilation is required.

Its native synchronization capabilities and its legendary Timeline with drag and drop programming makes it the ideal choice for Show Control Applications. However, complex logical task programming is also available.

Medialon Manager is hardware independent and relies on standard hardware from IT or audiovisual industries to connect to devices. The customer has the choice between proprietary or standard hardware making maintenance and upgrade far easier.

Medialon Manager can run in hidden mode where only custom designed interfaces are visible or in user mode allowing live edition. It comes with free Panel software for custom touch screen design.

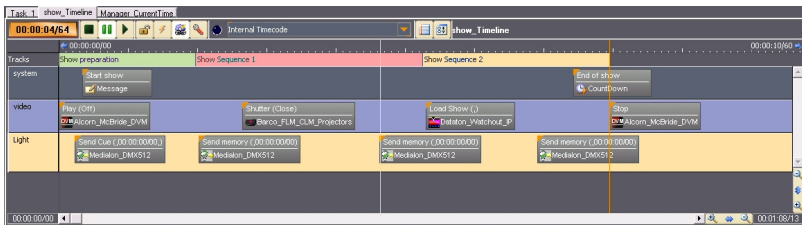
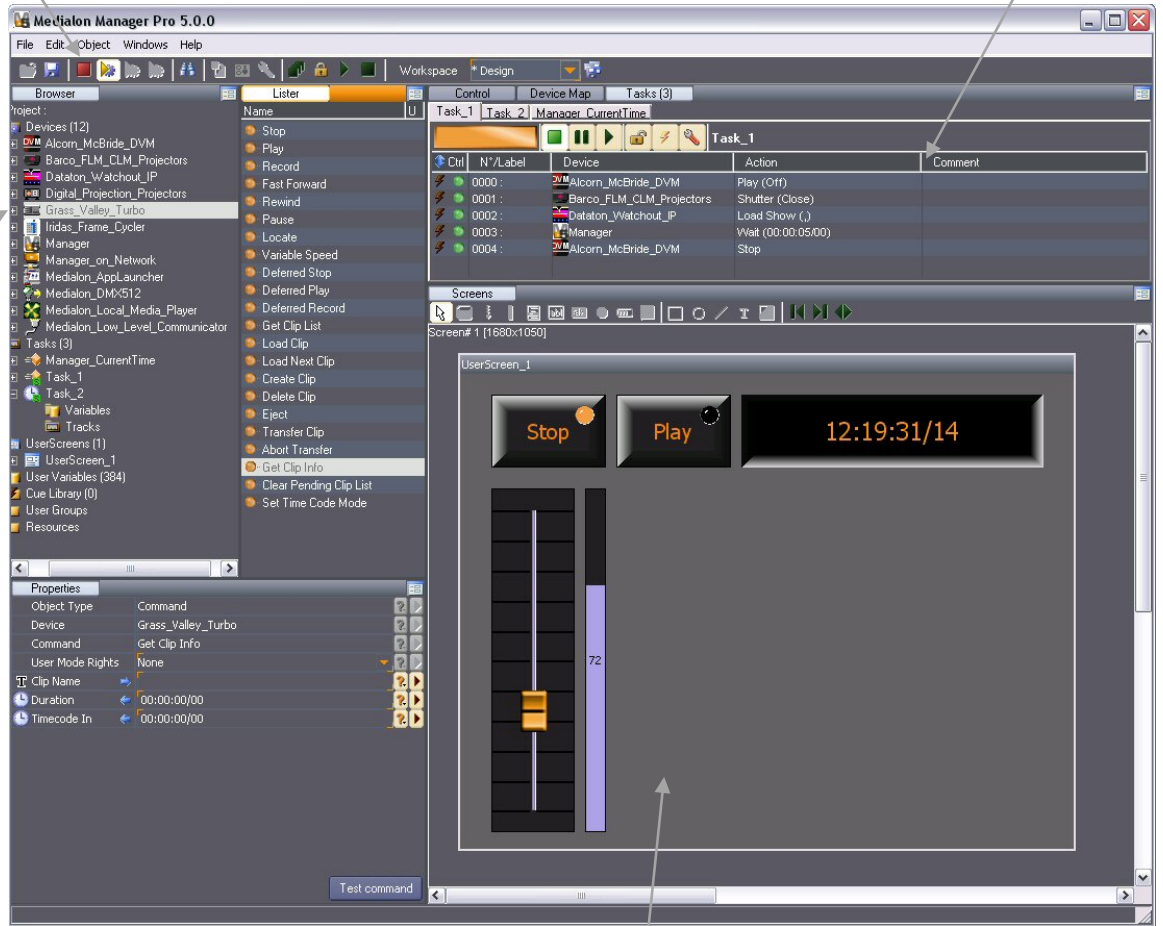


In Programming mode all elements are visible and editable, in run mode, only the user's screens will show up in the form and size designed by the programmer. There is no compilation needed, going from programming mode to run mode is just a click away.

Step based tasks allow creation of complex programming using logical operators, variables, and expressions. As in every Medialon Manager, task programming is done by drag and drop of commands from the Lister pane.

### Medialon Manager V5 in programming mode

The intuitive interface positions every programming object in the Browser / Lister panes: Controlled devices, logical and timeline tasks, custom user's screens, devices commands and their parameters.



Medialon Manager provides a built-in graphical user interface tool to create custom touch panels. These can run on the same PC or be exported on Wi-Fi touch panels.



The Timeline task is the most powerful synchronization task available. It is programmable by drag and drop of cues and synchronizes devices at a 100<sup>th</sup> of a second. Devices are "time-locked" together and can be synch to external Time Code.

### A driver for virtually anything...

Medialon Manager V5 uses Plug-in drivers called MxM (Manager X Object Modules) to control devices. It exists a wide range of MxMs for most popular devices on the market connected through Serial, Midi, Time Code, Infrared, Modbus, OPC, TCP/IP, etc. Manager also includes a powerful tool to write your own drivers in Serial, TCP/IP, UDP and MIDI. These drivers can be shared on [medialon.com](http://medialon.com) with other Medialon users.

### Hardware independent

Independently from the plug-in drivers, Medialon Manager V5 uses a resource to physically connect to the device. This resource can be a Windows serial or relay card, a Windows over IP serial converter, and since version 5 other control hardware such as AMX NetLinx, Artistic Licence Artnet, Global Caché, etc.



AMX NetLinx & NPort Server

### Not just a device controller...

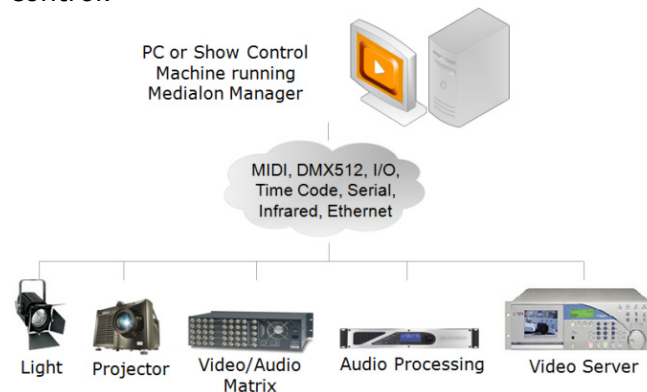
Medialon Manager includes MxMs plug-ins to add functionalities or control the new type of devices found in modern AV/IT installations: SQL Database for data management, FTP Site for media management and transfer, Email engine, Telephony engine to build up a DTMF server, etc. Medialon Manager really uses the power of modern AV/IT.

### An open network application ...

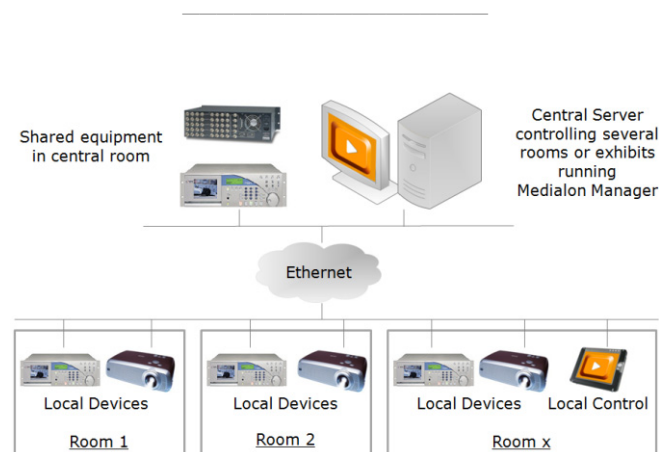
Medialon Manager is network oriented from its original first version. It not only controls many AV and IT devices over TCP/IP, but it also communicates with other Medialon Manager application on the same network. OpenCap, using MON protocol publishes tasks and User Screens to other Medialon Manager Applications for easy development of shared application. OpenCap is also available as an API offering powerful interoperability tool to communicate with third party software or develop add on module in C++ or C#.

### Unlimited topology

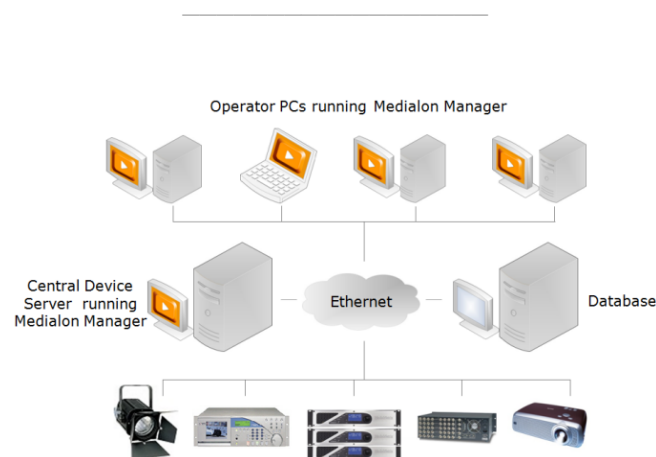
Thanks to its versatility, Medialon Manager can be deployed in various topologies ranging from the simple installation to complete facility wide control.



Medialon Manager used as standalone application for simple Show or AV System Control



Medialon Manager used in facility Wide control using the power of TCP / IP Control



Medialon Manager used in a multi operator installation, as in Theme Park or Convention Centre

## Part Number

MNG_V5	Manager V5 PRO - Professional full version with no restriction
MNG_V5L	Manager V5 LITE - Edition limited to one timeline
MNG_PANEL	Manager PANEL - FREE edition reserved to touch screen edition

## Control Protocol Supported

Network	Ethernet (TCP/IP, UDP)
Serial	Up to 256 internal or external serial ports
MIDI	MIDI Show Control, MIDI Machine Control
DMX 512	Up to 4096 channels internal, unlimited external, Artnet
Time code	Synchronization and generation
I/O	Relay and sensors
Infrared	Philips Protocol
Driver writing tool	Built-in TCP/IP serial and MIDI driver

## Interface Hardware Supported (non exhaustive)

AMX	Serial, I/O, Infrared, (Touchpanel)
Moxa	Serial
Opto22	I/O
Adlink	I/O
Redrat	Infrared
Kiss-Box	MIDI, DMX 512, I/O
Soundlight	DMX 512
Artnet	DMX 512
Medialon PCI	DMX, I/O, Serial
Windows®	Serial

## Multitasking Kernel

Several tasks can run simultaneously in synchronization or separately. Possibility of task programming while running in debug mode. Native network interconnection through TCP/IP. Unlimited number of tasks.

## Logical Programming Capabilities

Variables Type:	Integer, String, Time, Date, Enum. Unlimited number of variables
Operators	+, -, *, /, %, ^, =, ==, !=, >, <, >=, <=,  , &, #, ()
Functions	Hours, Minutes, Seconds, Frames, Day, Day Of The Week As Name, Day Of The Week As Number, Month, Year, Lower Case, Upper Case, Length, Char At, Get Field Of Enum, Get Index Of Enum, Random, Sqrt, Round, Ceil, Floor, Abs, Max, Min, Sin, Asin, Tan, Atan, Cos, Acos, Ln, Log, Exp

## Show Control Capabilities

Show synch.	Task programming through Timeline Tasks
Accuracy	One hundredth of a second time-based task synchronization accuracy with position tracking of controlled devices
Time Code	24, 25, 30, 30DP, and 100 fps base time supported. User defined or automatic type selected
Cue Recording	DMX, MIDI, Serial

## Human Interface Design Tools

User' screen design tool, buttons, sliders, bar graphs, video return windows, LEDs, text fields, picture import

## Server Capabilities

TCP/IP server and client plug-ins  
 Link to SQL database  
 Act as server for other Medialon Manager software

## Hardware Requirements

Windows Vista, Windows XP Pro, Windows 7 (32 bits)  
 Pentium IV minimum  
 256 RAM (512 recommended)  
 XGA video card, 20GB hard disk  
 TCP/IP, PCI Slots if DMX, RS or Time Code card used

### MEDIALON Inc.

2977 McFarlane Road, Suite 301  
 Miami, FL 33133, USA  
 Tel.: +1 305 445 4045  
 Fax: +1 305 445 4048  
[www.medialon.com](http://www.medialon.com)

### MEDIALON

101 rue Pierre Sépard  
 F 92324 Châtillon Cedex, France  
 Tel.: +33 (0)1 46 55 60 70  
 Fax: +33 (0)1 46 55 54 83  
[www.medialon.com](http://www.medialon.com)