

# NPort 5610-8



## Applications

Museums

Cabarets

Live Events

Cruise Ships

Staging

## Benefits

Affordable

Ethernet link (IP)

Fully Manager compatible

8 RS-232 Serial Ports

## 8 RS 232 NPort Server

The NPort Server 5610-8 is designed for RS-232 industrial communication. Each of the eight RS-232 port can control one device and support all regular RS232 features like DTR/DSR and RTS/CTS flow control. All of this makes the 5610-8 port server highly reliable and suitable for show control applications using Ethernet/IP connexions.

>> This model replaces the NPort Server DE-308.

# Installation

## Hardware Installation

### Connecting to the Network

There are two ways to use the 10/100BaseT Ethernet jack that is located on NPort Server Pro's back panel. For many of the applications using NPort Server Pro, you will simply plug one end of your Ethernet cable into the 10/100BaseT jack, and the other end into the hub connected to your network. In this case, use a regular straight-through Ethernet cable. In some cases, such as when configuring drivers and software, you will find it convenient to hook NPort Server Pro directly to your computer's Ethernet card. To do this you will need to use a cross-over cable, such as the one supplied with your server.

### Connecting the Power

After connecting NPort Server Pro to your network, you should take the following steps to connect the power cable. NPort Server Pro's power supply is designed to support 90 – 260 VAC, making it possible for you to use the server regardless of your AC power supply's voltage.

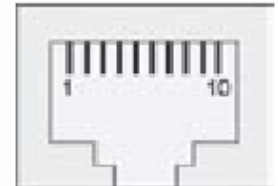
*Note: It is strongly recommended that NPort Server Pro be connected to the network before turning on the power.*

1. Connect the power cord to NPort Server Pro's rear panel.
2. Plug the other end of the power cord into an electrical outlet.
3. Turn the on/off switch to the I-position.
4. Check the power LED on the front panel to verify that the server is receiving power.

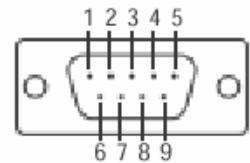
### Connecting Asynchronous Serial Devices

You may use the RJ-45 to female DB-9 cable (not included) with NPort Server Pro to connect serial devices to the server. Plug the RJ-45 connector into one of the serial port jacks on the server's rear panel, and then connect the DB9 connector to the serial device (Adaptation cable may be needed).

Pin	RS-232
1	DCD
2	DSR
3	RTS
4	GND
5	TxD
6	RxD
7	GND
8	CTS
9	DTR
10	-



Pin	RS-232
1	DCD
2	RxD
3	TxD
4	DTR
5	GND
6	DSR
7	RTS
8	CTS
9	---



## Software Driver Installation

### Installing NPort Administration Suite

Follow the steps given below to install NPort Administration Suite on your Windows-based computer.

1. Run the NPort Administration Suite setup program, provided in your package. This software can also be downloaded from the MOXA web site.

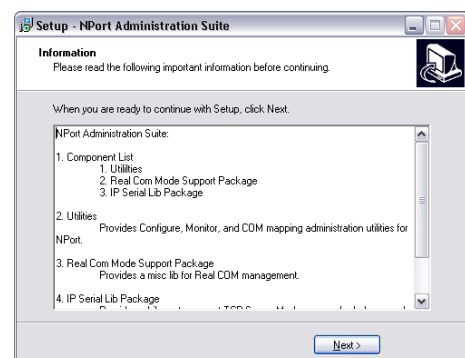
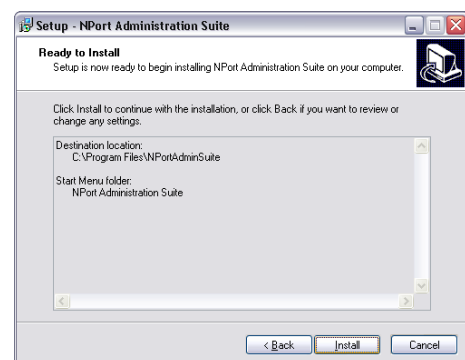
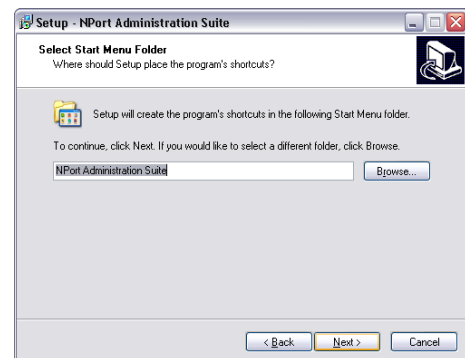
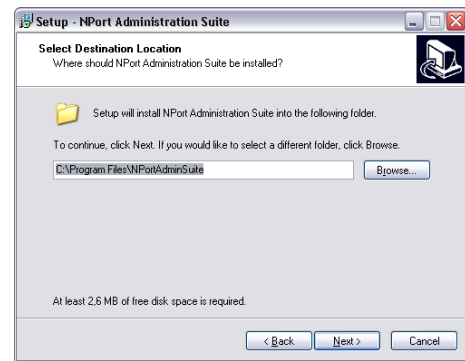
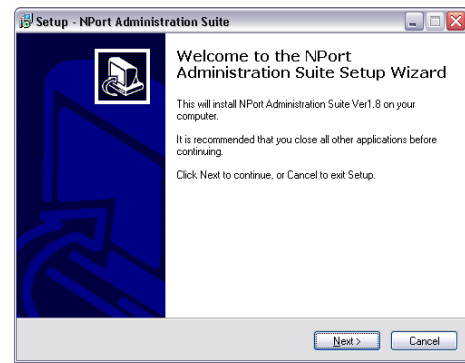
2. Click on **Next** when the **Welcome** window opens to proceed with the installation.

3. Change, if needed, the target installation folder and click on **Next**.

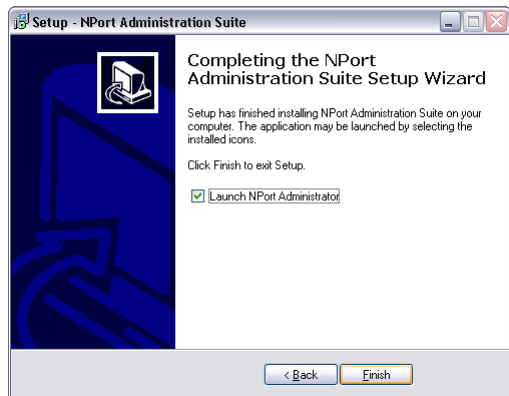
4. Change if needed, the location of the program's shortcuts and click on **Next**.

5. Click on **Install** to start installation of program's files.

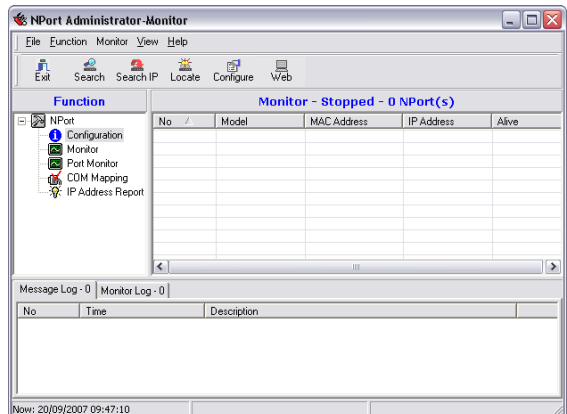
6. The **Installing** window reports the progress of the installation and when finished, a window displays installation information report. Click **Next** to continue with the installation.



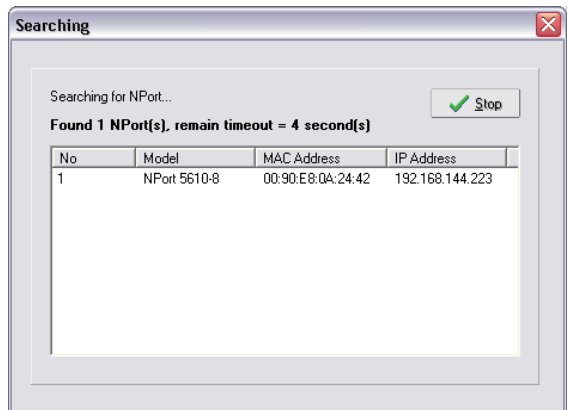
7. Select **Launch NPort Administrator** and click **Finish**. You can always run NPort Administrator later from under the Windows **Start** button.



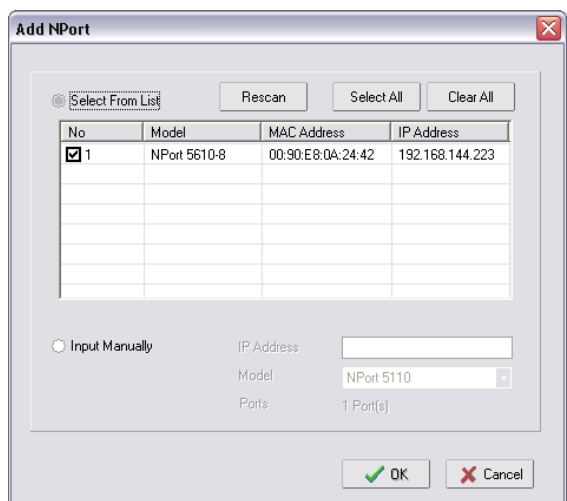
8. **NPort Administrator** opens. Click on **Configuration** into the Function tree view.



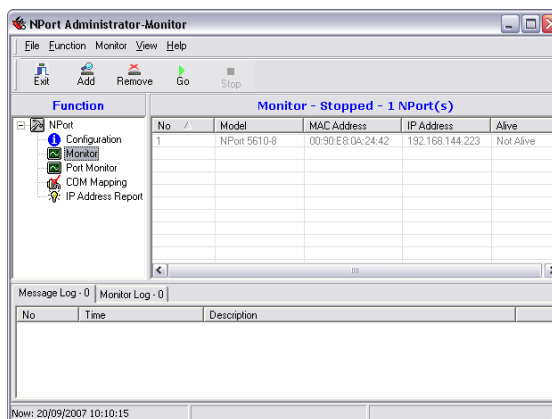
9. Click on **Search** icon to automatically discover NPort Servers connected to your host's LAN.



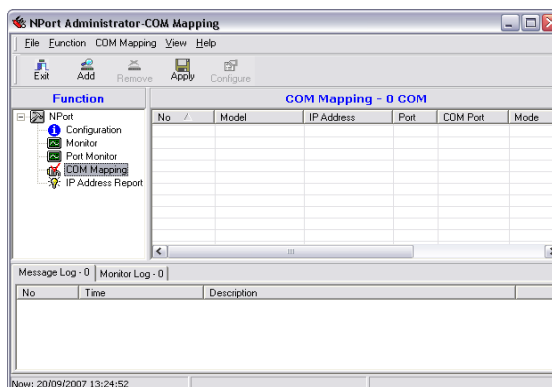
10. Click on the NPort server you would like to add, and then click on **Ok** to continue.



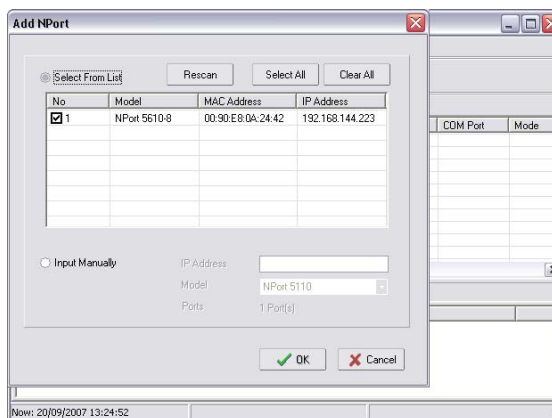
11. The selected NPort appears on the list.



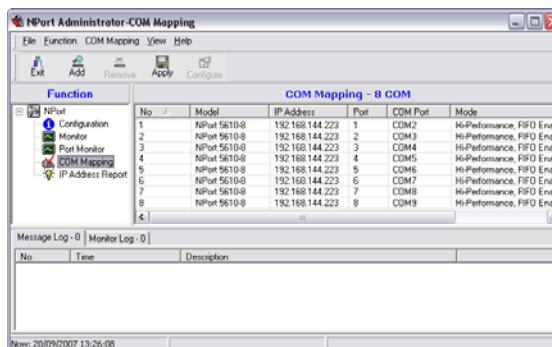
12. Click on **COM Mapping** into the Function tree view and then click **Add** icon.



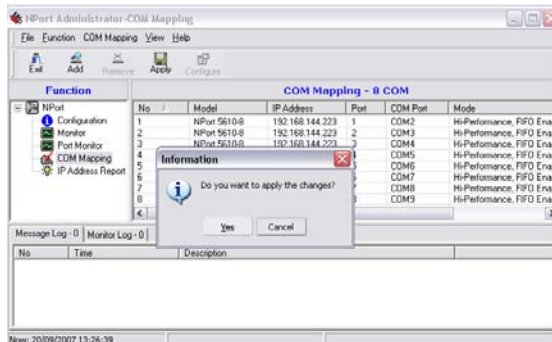
13. Select the NPort you wish to map and click on **Ok**. This will map the NPort Server's COM ports into your system. The NPort's serial ports are mapped sequentially, starting from the smallest available COM number. Higher COM numbers that are already assigned to other ports will be skipped.



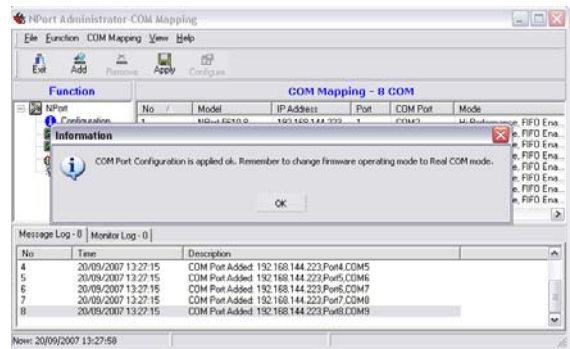
14. NPort Administrator now displays the NPort and ports that were just added to your host computer. Click on **Apply** icon to apply the mapping.



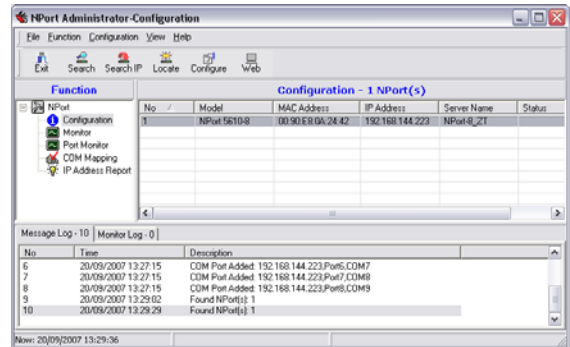
15. Click **Yes** to confirm the apply operation.



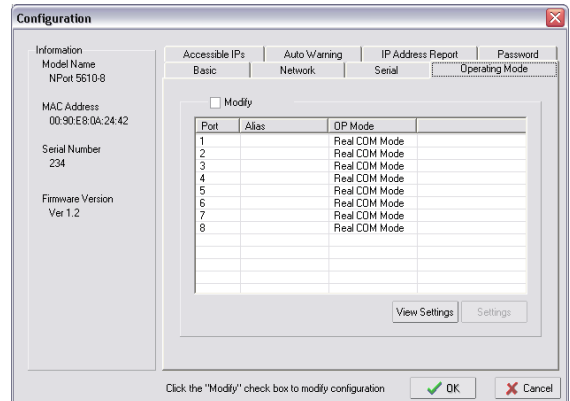
16. After the mapping has been applied, a message box remembers to check the NPort Server's COM Mode.



17. Click on **Configuration** into the Function tree view and click **Configure** icon



18. In the configuration dialog, click on the **Operating Mode** tab and check if the NPort Mode is set to “Real COM Mode” for each port. If it's not the case, click on **Modify** checkbox and change the mode to “Real COM Mode” for all needed ports. Click **Ok** to confirm your changes.



## Medialon MXM Installation

No specific MxM installation is needed  
*Refer to the MxM Help for Device creation and Commands.*

## Check Installation Result

This section provides help for troubleshooting problems encountered in NPort Server installation and configuration process. The most common problems are resolved following these steps:

Make sure the drivers are properly installed. Verify that the NPort Server is properly configured using Windows Device Manager. To get to the Device Manager, follow **Start -> Settings -> Control Panel -> System -> System Properties -> Device Manager**. If the driver installation for new added device is successful, you can see the Moxa NPort Server in the "Multi-port serial adapter" folder.

If a conflict is present, try to uninstall, power down, power back on and redo the install procedure. If this fails refer to the MEDIALON support (as indicated in the final section of this manual).

## Medialon Support:

For any problem with the installation of the MOXA NPort Server, please use MEDIALON Support Hotline sending an E-Mail to **[support@medialon.com](mailto:support@medialon.com)**

Please make sure you indicate the following minimal set of information:

- Version of Medialon Manager software used
- Version of MxM used
- Model and serial number of the MOXA NPort Server
- Brand and model of the PC
- Version of the Windows operating system (reported in the **Start -> Settings -> Control Panel -> System -> System Properties -> General** window also reachable right clicking on **My Computer** and selecting **Properties**)
- Is Windows **Device Manager** reporting configuration problems?
- Was the NPort Server tested on another PC?

For updated information please refer to our website, which is freely available at **<http://www.medialon.com>** where you will also find all updated MxMs, Manager software.

Medialon  
101 rue Pierre Sépard  
F 92324 Chatillon Cedex France  
Tel : + 33 (0)1 46 55 60 70  
Fax : + 33 (0)1 46 55 54 83  
[www.medialon.com](http://www.medialon.com)

Medialon Inc  
701 SW 27th Ave, Suite 702  
Miami, FL 33135, USA  
Tel : + 1 305 631 4155  
Fax : + 1 305 631 4159  
[www.medialon.com](http://www.medialon.com)