

NUDAM MODULES



Applications

- Relays Control
- Input sensors
- Rigging Control
- Fireworks

Benefits

- Daisy Chainable
- RS 485 Reliable protocol
- Positrack compatible
- Several type can be mixed on same chain
- Wall or Din rail mounting

4 Digital IOs Modules

The NuDAM series is an industrial solution for input / Output relays in a Medialon installation. Up to 128 modules can be chained on an RS 485 serial line and require a RS 232 to RS 485 converter at the beginning of the chain. They can be wall or din rail Mounted. There are modules for output only, input only, or both. They can be controlled via the NuDAM MxM which provides all necessary commands and return status variable of all inputs.

> This notice talks about the 6520 (RS232 to RS485 converter) and the 6060 module (4 I/Os).

Installation

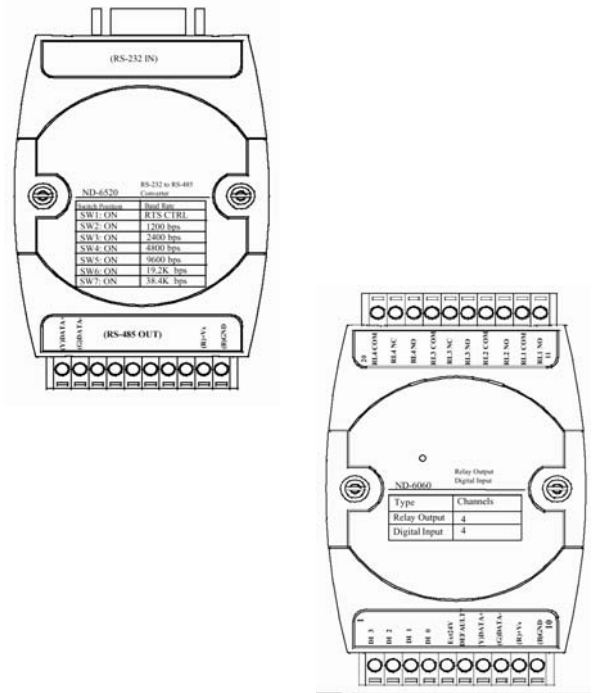
Hardware Installation and configuration

1. When several NuDAM modules are connected on the same network, each module must be set with a single address. (From 2 to 255)

2. Connect the 6520 converter RS232/RS485 to a free serial RS232 comport of the computer

3. Connect the NuDAM module to the converter according to the wiring diagram: Data + / Data - / Gnd / Power Supply.

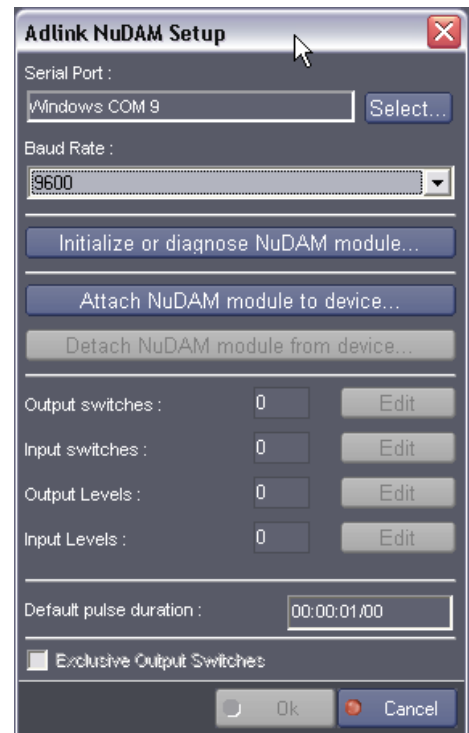
Important: Only one module can be set at the same time. So each module must be addressed independently.



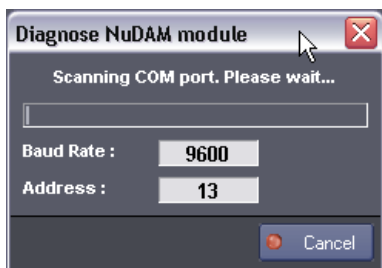
4. Start Medialon Manager software. Create an Adlink NuDAM device (See Medialon Manager V4 documentation for more details about **device creation**)



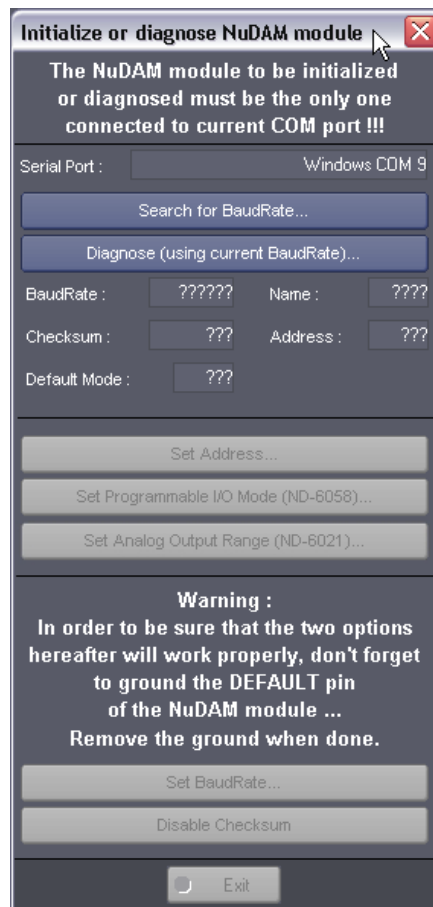
5. Select COM port and Baud rate (9600 by default). Click on button **Initialize or diagnose NuDAM module...**



6. Click on button **Diagnose (using current Baud rate)**... A diagnose window opens and shows a progress bar scanning all addresses.



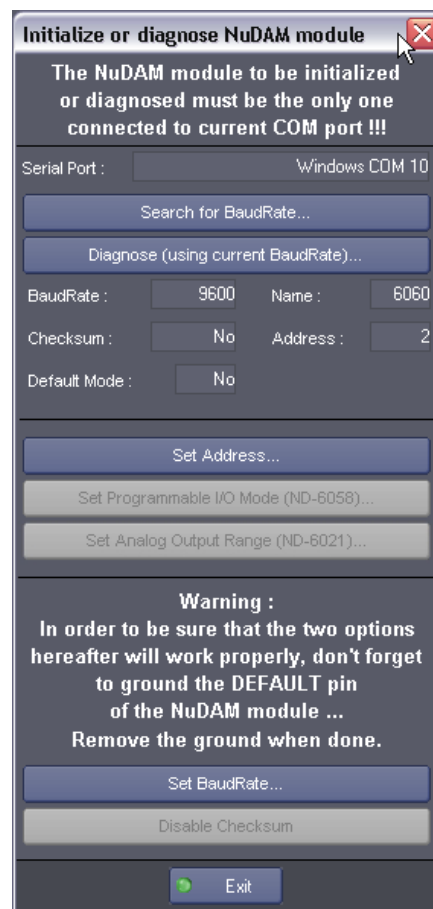
7. Once the module connected is found, the parameters of the modules are displayed.



8. Click on button **Set Address...** to change the address module. Select the new address from the list (2-255) and click on button **OK**



9. Click on button **Exit** to close the **initialize or diagnose NuDAM module** window. To finish the device creation, you have to attach the module to the device by clicking on button **Attach NuDAM module to device...** (See Mxm Help for more details)



Medialon MXM Installation

No specific MxM installation is needed.

Refer to the MxM Help for Device creation and Commands.

Medialon Support:

For any problem with the installation of the Adlink NuDAM modules, please use MEDIALON Support Hotline sending an E-Mail to support@medialon.com

Please make sure you indicate the following minimal set of information:

- Version of Medialon Manager Software used
- Version of MxM used
- Model and serial number of NuDAM Modules
- Brand and model of the PC
- Version of the Windows operating system (reported in the **Start -> Settings -> Control Panel -> System -> System Properties -> General** window also reachable right clicking on **My Computer** and selecting **Properties**)
- Was the module(s) tested on another PC?

For updated information please refer to our website, which is freely available at <http://www.medialon.com> where you will also find all updated MxMs, Manager software.

Medialon
101 rue Pierre Séward
F 92324 Chatillon Cedex France
Tel : + 33 (0)1 46 55 60 70
Fax : + 33 (0)1 46 55 54 83
www.medialon.com

Medialon Inc
701 SW 27th Ave, Suite 702
Miami, FL 33135, USA
Tel : + 1 305 631 4155
Fax : + 1 305 631 4159
www.medialon.com