

SL_DMXX_PCI

> PCI DMX Card

Benefits

Affordable

Reliable PCI Card

**Fully Medialon
Manager Software
compatible**

2 DMX Universes

Applications

Museums

Live Events

Cabarets

Cruise Ships

Staging

The **SL_DMXX_PCI** is a versatile DMX-512 interface card that fits into a Medialon Show Control Machine Pro or into any PC running Medialon Manager Show & Media Control Software with a PCI Slot.

The SL_DMXX_PCI offers 1024 channels in or 1024 channels out or combination: this card handles two complete DMX in/out links in parallel. Up to four cards can be installed in one PC. This will give you the incredible amount of more than 4000 channels at your fingertips...

It complies with USITT DMX-512/1990 and DIN 56930-2 standards.

The card features its own microprocessor and does not load the host CPU. Optical output isolation prevents ground loops. The 1514PCI uses the I/O address range to communicate with the host CPU. No other PC resources are needed.

Part Number

SL_DMX_PCI DMX-512 interface card for PCI slot, 1024 in/out

Specifications

Connector Type: Sub-D9
Opto-isolated output driver (potential-free output)
Impedance
DMX read and write simultaneously for 1024
USITT DMX-512/1990 and DIN 56930-2 standards

Accessories

Included: Cables

SL_DMX_PCI Related Product

Optional: Show Control Machine Pro (GD_SCMPRO)

Hardware Installation

Power down your desktop computer, open the case and locate an empty PCI slot (one of the short ones in white/beige color).

Remove the slot cover bracket.

Unpack the SL_DMX_PCI interface and remove the enclosed PCI controller card from the antistatic bag.

Note: standard precautions against static discharge should be taken when handling the card. Install the card in the empty slot, fastening properly with the mounting screw. Always use a fixing screw to fix the card, to avoid card damage. Remove the cable assembly from the bag and connect the 9-pin connector to the DMX Link connectors on the metal bracket of the SL_DMX_PCI Card. Close back the desktop computer, power on and proceed with software installation as described in the next section.

Software Driver Installation

The card is configured with a special driver that has a Unified Driver model compatible with Windows 2000®.

The driver is distributed as a dedicated floppy disk.

Upon the next start of Windows, a new multimedia device will be detected. The installation will be performed automatically. Insert the driver disk into drive A: and follow the on-screen instructions.

During boot, Windows detects a specific Multimedia device called "Dual Link DMX-512 Card" and it configures it with the standard Plug-and-Play process (using a configuration information file called "DMXPCI.INF" and a driver file called "DMXPCI.SYS").



When prompted by Windows configuration manager, insert the driver floppy and continue the installation procedure. Follow the standard steps just taking care to always specify the floppy (A:) as the source unit.

Click "Finish" to complete the driver installation. Rebooting the machine is not required.

If Medialon Manager Software is not installed, proceed with the installation of the software package.



Medialon MxM Installation



Select Medialon DMX512 in the MxM Setup menu.

If a new plug-in is detected at start up by Medialon Manager, the user is prompted for installing it and the setup of this resource is automatically opened. This setup window can also be accessed later from the "File/MxM Setup" menu ("modify resource") or from the setup of the device itself.

The window that pops up is the list of the resources depending on the Medialon DMX512 plug-ins installed.

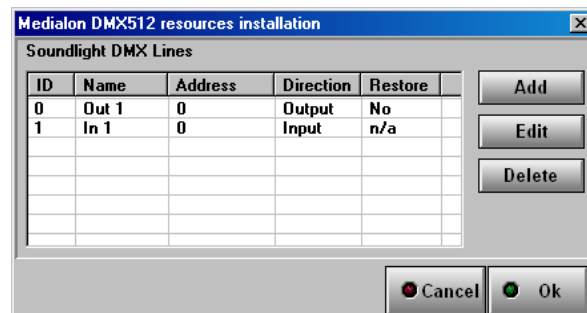
A click on "Setup selected resource" will call the specific setup window of each resource.

The list of resource is defined by the presence of DMX512 modules manufactured by Medialon in the directory "MxM\DMX512 Modules". These modules are files with a .dmx512 extension.

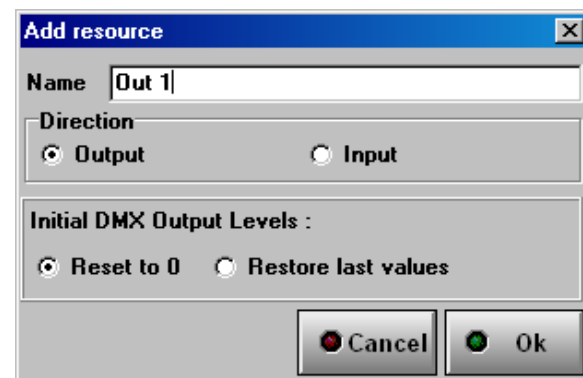
Important: if you want to create a device without the corresponding hardware installed, you must create at least one DMX line in the resource that you want to use.

Soundlight resource

- "Add" will pop up a window where the parameters of the line to add can be entered.
- "Edit" will pop up a window with the parameters of the line to modify.
- "Delete" will delete the line selected.



DMX Output Levels when MxM starts:



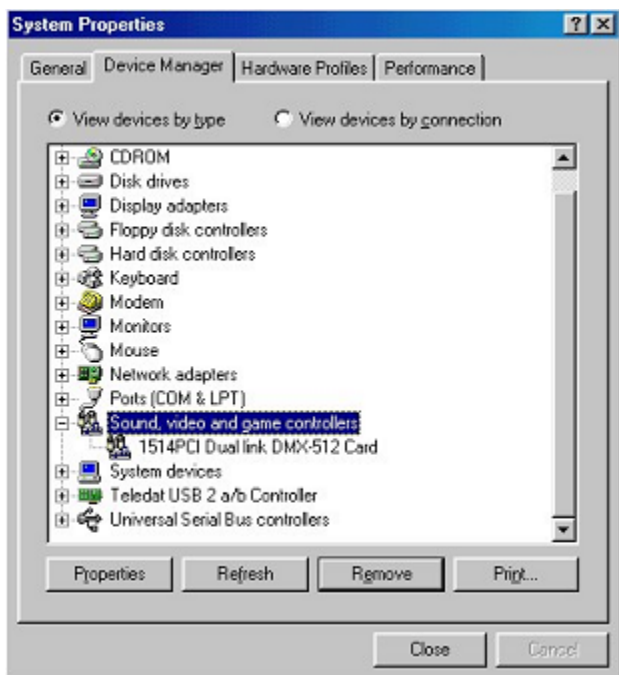
- If "Reset DMX Levels to 0" is checked, the DMX Output Levels are set to 0 when the MxM is initialized.

- If "Restore saved DMX Levels" is checked, the DMX Output Levels are set the last known values when the MxM is initialized. When this option is checked, DMX output levels are regularly saved in a file and these values are used at MxM start-up. Using this option may help to avoid "blackout" when the MxM starts.

WARNING: At this time of writing, there is a known problem with the Soundlight resource: if you setup the resource as an input on socket 1 and an output on socket 2 it does not work.

Refer to the MxM Help for Device creation and Commands.

Troubleshooting Installation



This section provides help for troubleshooting problems encountered in SL_DMX_PCI installation and configuration process. The most common problems are resolved following these steps:

- Make sure the card is properly seated in the PCI slot and the screw is fastened.
- Make sure the drivers are properly installed.
- Verify that the card is properly configured using Windows Device Manager. To get to the "Device Manager", follow "Start" > "Settings" > "Control Panel" > "System" > "System Properties" > "Device Manager".

If a conflict is present, try to uninstall, power down, power back on and reconfigure that card.

If this fails refer to the MEDIALON support (as indicated in the final section of this manual).

Verify in Medialon Manager Software, if the DMX resource is declared in the MxM Set Up.

Diagnostic Utility Program

The driver floppy contains a diagnostic utility program called "WIZARD.EXE" that may be used to screen possible installation problems or PC malfunctions. The Utility has two functions, called "Check Driver" and "Check Card" that are respectively used to verify the proper installation of the card driver and the proper initialization and functionality of the card itself.

To run the utility, please follow these steps: Locate the "WIZARD.EXE" utility in the floppy disk following "My Computer" > "3½Floppy (A:)" and run it by double-clicking on the Wizard program icon.

To perform the "Check Driver" function, select this function in the pull-down program menu following the "Options" > "Check Driver" path.

If the driver is properly loaded, then a window will specify which driver can be found (following the program prompts until a driver is found), with the indication of the mapped virtual address and the socket/slot locator.

If the driver is not properly loaded, then a driver access error window will be shown. In this case try repeating the installation procedure from the beginning.

If the failure persists, check the configuration of the card using Windows Device Manager as described above.

If the problem can not be resolved, try on another computer to screen possible configuration issues, and then report the problem to MEDIALON support as described in the last section of this manual.

If the driver Open is successfully performed, then perform the "Check Card" function in the pull down program menu (following the "Options" path as described above) to let Wizard access the card (in the same way the Controller program would) and detect the type of card installed.

If the card is properly detected, a window will be shown indicating the type of card that is detected. Each card is identified by its special ID, which should read "DMXOEM1". In this case the Controller software should be able to access the card properly and work normally.

If the card is properly detected, but you have problems running your Medialon Manager Software, please refer to the Instruction Manual of the Medialon Manager Software for troubleshooting.

If the driver Open is successfully performed but the card cannot be detected, there are two possibilities:

- Something went wrong during installation of the card, repeat the complete installation after powering off and back on your computer. Before installing drivers again, we recommend to physically erase all existing drivers referring to this interface from hard disk.

- Something is wrong with the card or the computer. Try the card on another computer (repeating the installation flow as described).

If the card works on another computer, signal the problem to MEDIALON support.

If the card does not work on the alternative computer, the card is probably defective. In this case please contact your dealer for a replacement card.

Medialon Support

For any problem with the installation of the SL_DMX_PCI card, please use MEDIALON Support Service sending an email to support@medialon.com

Please make sure you indicate the following minimal set of information:

- Version of Medialon Manager Software used
- Version of MxM Medialon DMX512 use
- Model and serial number of the DMXPCI card
- Brand and model of the PC
- Version of the Windows operating system (reported in the Start > Settings > Control Panel > System > System Properties > General window also reachable right clicking on My Computer and selecting Properties)
- Is Windows Device Manager reporting configuration problems?
- Run the WIZARD.EXE utility to screen the problem:
- Is Check Driver successful?
- Does Check Card detect a valid card type?
- Was the card tested on another PC?

For updated information please refer to our website, which is freely available at www.medialon.com where you will also find all updated Medialon Manager Software MxMs.

MEDIALON Inc.

2977 McFarlane Road, Suite 301
Miami, FL 33133, USA
Tel.: +1 305 445 4045
Fax: +1 305 445 4048
www.medialon.com

MEDIALON

101 rue Pierre Sépard
F 92324 Châtillon Cedex, France
Tel.: +33 (0)1 46 55 60 70
Fax: +33 (0)1 46 55 54 83
www.medialon.com