



# MEDIALON SCHEDULER

## > Scheduling Software for Show & Media

### Benefits

**Schedule any number of Medialon Manager Control applications**

**No programming, already Medialon Manager compatible**

**Client Server application with any number of operators**

**Logical operation for schedule validation based on external conditions**

**Redundant design with 2 servers running**

### Applications

**Theme Parks**

**Museums**

**Cruise Ships**

**Architectural Video**

**Led Wall**

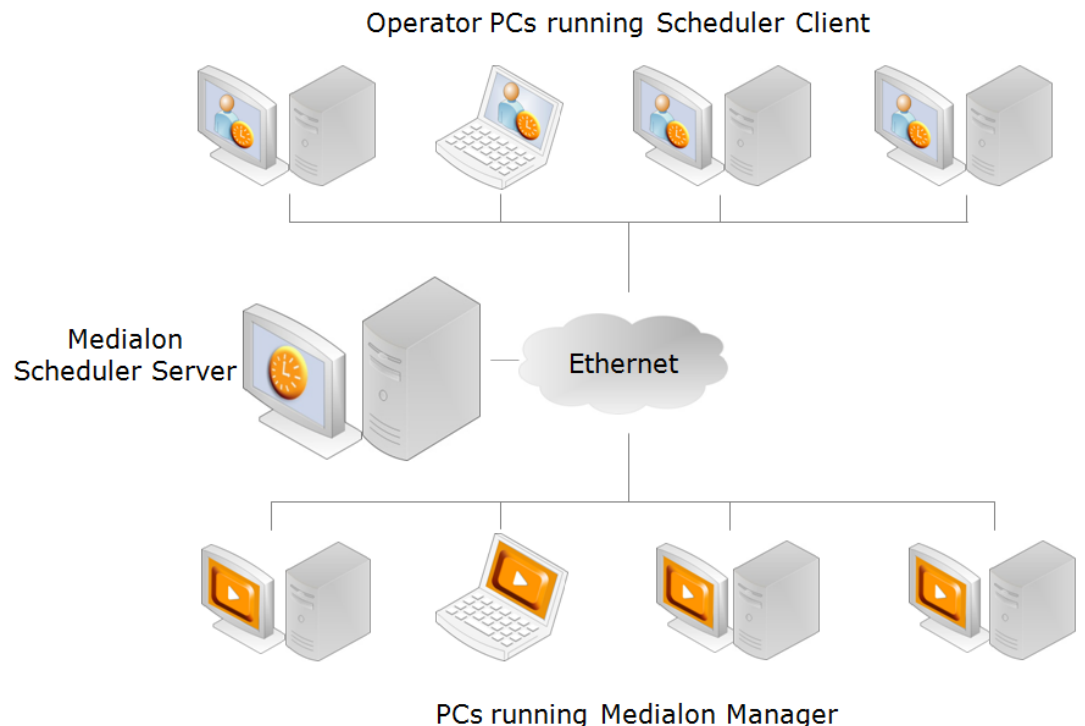
**Digital Signage**

**Medialon Scheduler** is a Windows based application to schedule any type of events programmed in Medialon Manager Show & Media Control software.

Medialon Scheduler is designed to schedule and supervise several exhibitions, shows or automation applications using Medialon Manager from one central location. It is ideal to operate all the exhibits of museums or science centers, all the venues and shows in cruise ships or theme parks or digital signage playback in large malls or corporate buildings.

Medialon Scheduler is a client server application allowing any number of operators to schedule any number of events in any number of Medialon Manager Applications over a network.

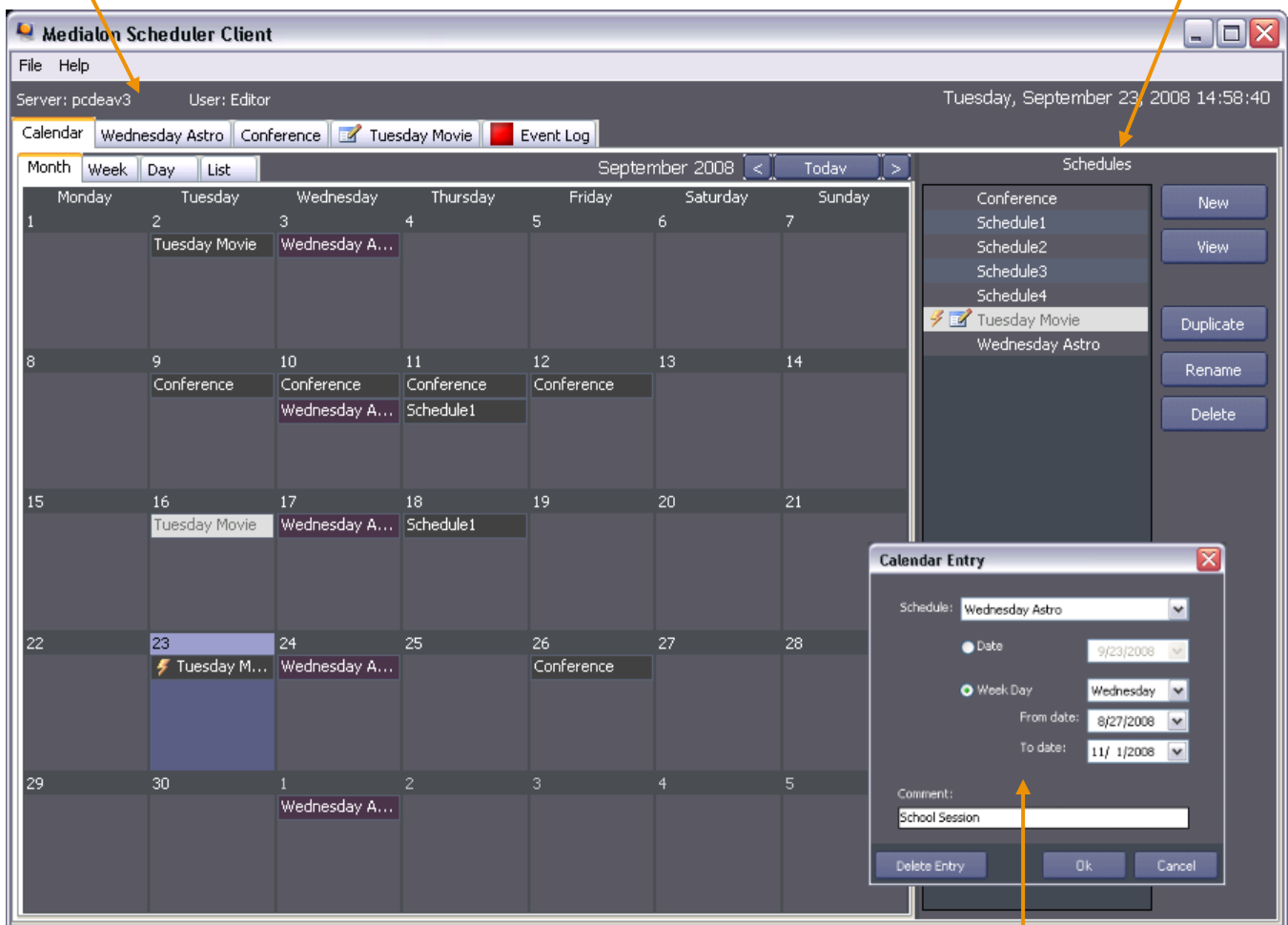
The central server runs as a Windows service while clients (user interface) and controlled applications (Medialon Manager PCs) are connected over TCP/IP.



The main window displays the calendar and the programmed schedules. Calendar offers month, week, day and even list views.

List of available Schedules. New schedules can be added or edited from this main window. Adding a schedule at a given date is done by intuitive drag and drop.

### Medialon Scheduler main window



Calendar event can have specific properties, being executed once at a given date or repeated every specific weekday within a range of dates. Comment can be added to each calendar entry.

## A bank of Schedules...

Medialon Scheduler uses 24 hours schedules not related to a specific date.

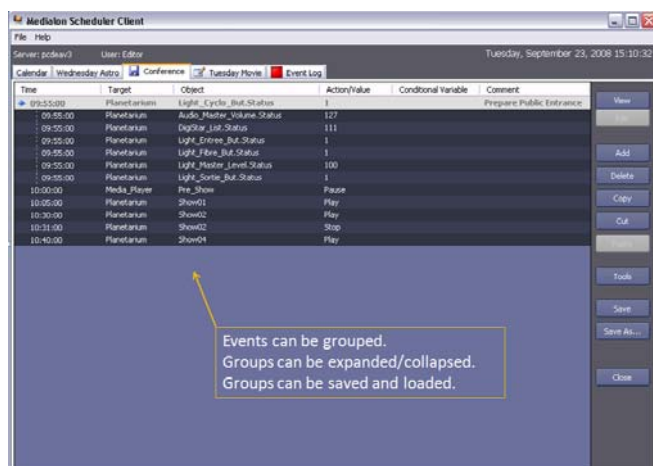
Each schedule contains events to trigger Medialon Manager's tasks (shows or automation tasks), cues (simple command to a device) or to set value of specific variables.

Events are based on absolute hours in the schedule. Several events can be grouped as one and be executed in one batch.

A variable value can be tested before performing an action allowing external value to over-ride MS schedules.

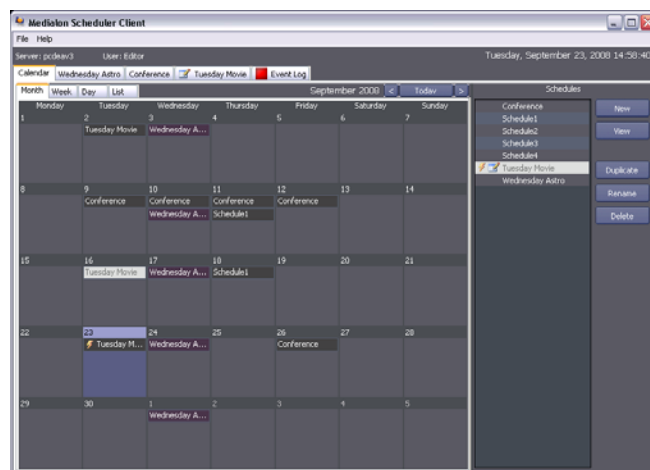
All tasks and variables names to be triggered are automatically retrieved over the network via Open Cap (MedialonOnNetwork secured protocol and thus displayed by their name for easier programming.

The creation of event in a schedule is very intuitive.



## Programmed on a calendar

Once schedules are ready, they can be programmed to be executed at a specific date in the Calendar. The same schedule can thus be programmed several days without having to be re-written by operators.



If a schedule is edited after being programmed on the calendar, the next occurrence in the calendar will follow the editions.

## Administration

Administration tool allows selection of Medialon Manager Servers that will be accessible by the scheduler.

Several access rights are available for administrator, editor and viewer operators.

Files saving path can be set on another computer if a redundant configuration is to be used.

## Part Number

MSCH	Medialon Scheduler Solo - for one operator / one target (Manager, Showmaster ST, Showmaster Pro)
MSCH_4	Medialon Scheduler Multi – for 4 operators / 4 targets (Manager, Showmaster ST, Showmaster Pro)
MSCH_X	Medialon Scheduler Multi - for unlimited operators & targets (Manager, Showmaster ST, Showmaster Pro)

## Control Protocol Supported

Remote GUI	Medialon Scheduler protocol over TCP/IP
Manager Control	Open Cap over TCP/IP

## Programming Capabilities

Qty. of Schedules	Unlimited
Qty. of Events	Unlimited
Event Groups	Unlimited
Accuracy	Internal 1/10 <sup>th</sup> of a second User 1 Second
External Clock	Medialon Scheduler can be synchronized to an external clock provided by an SNTP server. Default mode is the PC internal clock.
Day Range	A Scheduler day spans over 24 hours (not necessarily from 00:00 to 24:00. It can be set from 03:00 to 03:00 for example).

## Remote Access Capabilities

Remote	Calendar and Schedules can be remotely programmed from any PC on the local network.
Concurrent Access	Multiple remote PCs can view/edit Calendar and Schedules concurrently thanks to the built-in Medialon Scheduler concurrent access control mechanism.

## Administration Capabilities

Administration	Medialon Scheduler can be remotely administrated and configured from any PC on the local network.
User Levels	3 password protected user levels: Administrator, Editor and Viewer levels which allow secured access to Medialon Scheduler.
Event Log	Schedule and System events are logged on local log files and dispatched to any connected remote PC. Remote PCs can also browse log files.

## User Interface

Easy Access	Medialon Scheduler user interface is clearly separated in several tabs.
Calendar	Medialon Scheduler provides a Calendar view familiar to any user of agenda software. This allows non technical personnel to easily understand the product.
Schedule	Medialon Scheduler can open an unlimited number of tabs. Programming a schedule can be done using the mouse only (no keyboard required).

### MEDIALON Inc.

2977 McFarlane Road, Suite 301  
Miami, FL 33133, USA  
Tel.: +1 305 445 4045  
Fax: +1 305 445 4048  
[www.medialon.com](http://www.medialon.com)

### MEDIALON

101 rue Pierre Sépard  
F 92324 Châtillon Cedex, France  
Tel.: +33 (0)1 46 55 60 70  
Fax: +33 (0)1 46 55 54 83  
[www.medialon.com](http://www.medialon.com)